



Devon and Severn IFCA Mobile Fishing Permit Byelaw Permit Condition Annexes

December 2024

*www.ukho.gov.uk/copyright

All Positions are expressed in degrees, decimal minutes (DDM) and shall be measured according to the WGS84 Geographic Co-ordinate System

Version Control: Mobile Fishing Permit Byelaw Permit Annexes December 2024

Contents

Annex 1 Lundy	4
Annex 1a Lundy	6
Annex 1b Lundy	8
Annex 2 Lyme Bay	10
Annex 3 Tor Bay	12
Annex 3a Tor Bay	14
Area 1	15
Area 2	15
Area 3	16
Area 4	16
Annex 3b Tor Bay	17
Annex 4 Plymouth Sound and Estuaries	19
Annex 4a Plymouth Sound and Estuaries	21
Annex 5	23
Area 1 - South of Salcombe	24
Area 2 - Bigbury Bay	25
Annex 5a	26
Area A	27
Area B	27
Area C	28
Area D	28
Permit Condition 4.4 Table 1	28
Annex 6 Severn Estuary	29
Annex 7 Bideford to Foreland Point MCZ	31
Annex 7 Lundy MCZ	33
Annex 7 Skerries Bank and Surrounds MCZ –	35
Annex 8 Specified Coastal Mariculture Sites -	37
Area A Lyme Bay	39
Area B Lyme Bay	39
Area C Tor Bay	39
Annex 9 Bideford to Foreland Point MCZ	40
Annex 9a Bideford to Foreland Point MCZ	42
Annex 10 Morte Platform MCZ	44
Annex 10a Morte Platform MCZ	46
Annex 11 South Australian Wreck	48
Annex 12 Hartland Point to Tintagel MCZ	50

*www.ukho.gov.uk/copyright

All Positions are expressed in degrees, decimal minutes (DDM) and shall be measured according to the WGS84 Geographic Co-ordinate System

Version Control: Mobile Fishing Permit Byelaw Permit Annexes December 2024

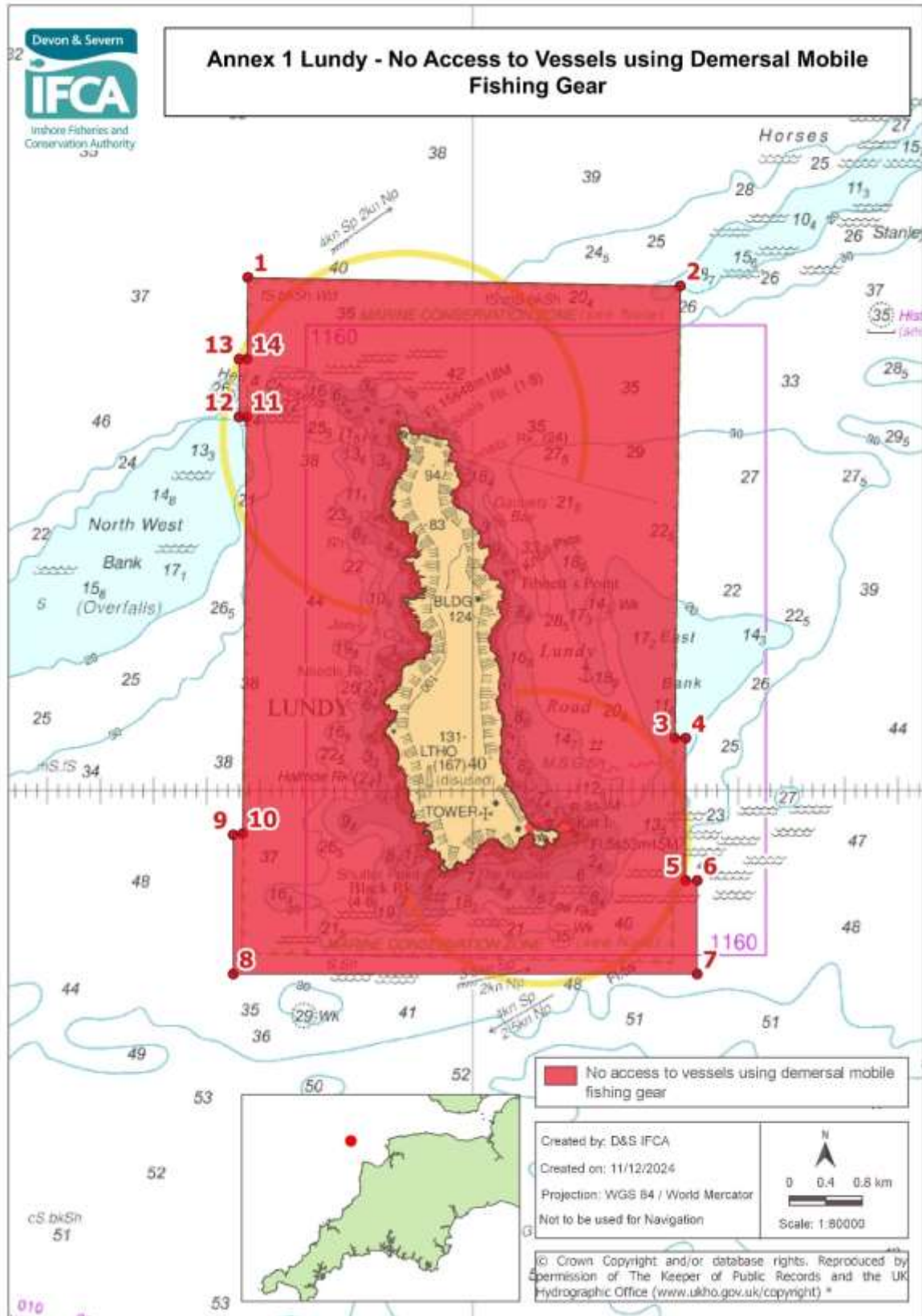
Annex 13 Salcombe Harbour	52
Annex13a Salcombe Harbour	54
Annex 14	56
Annex 14 (continued)	57

*www.ukho.gov.uk/copyright

All Positions are expressed in degrees, decimal minutes (DDM) and shall be measured according to the WGS84 Geographic Co-ordinate System

Version Control: Mobile Fishing Permit Byelaw Permit Annexes December 2024

Annex 1 Lundy – No Access to Vessels using Demersal Mobile Fishing Gear.



*www.ukho.gov.uk/copyright

All Positions are expressed in degrees, decimal minutes (DDM) and shall be measured according to the WGS84 Geographic Co-ordinate System

Version Control: Mobile Fishing Permit Byelaw Permit Annexes December 2024

No access to vessels using demersal mobile fishing gear in the area within the D&S IFCA District outlined by the following points plotted sequentially from Point 1 to Point 14, then returning to Point 1. The landward boundary follows Mean High Water.

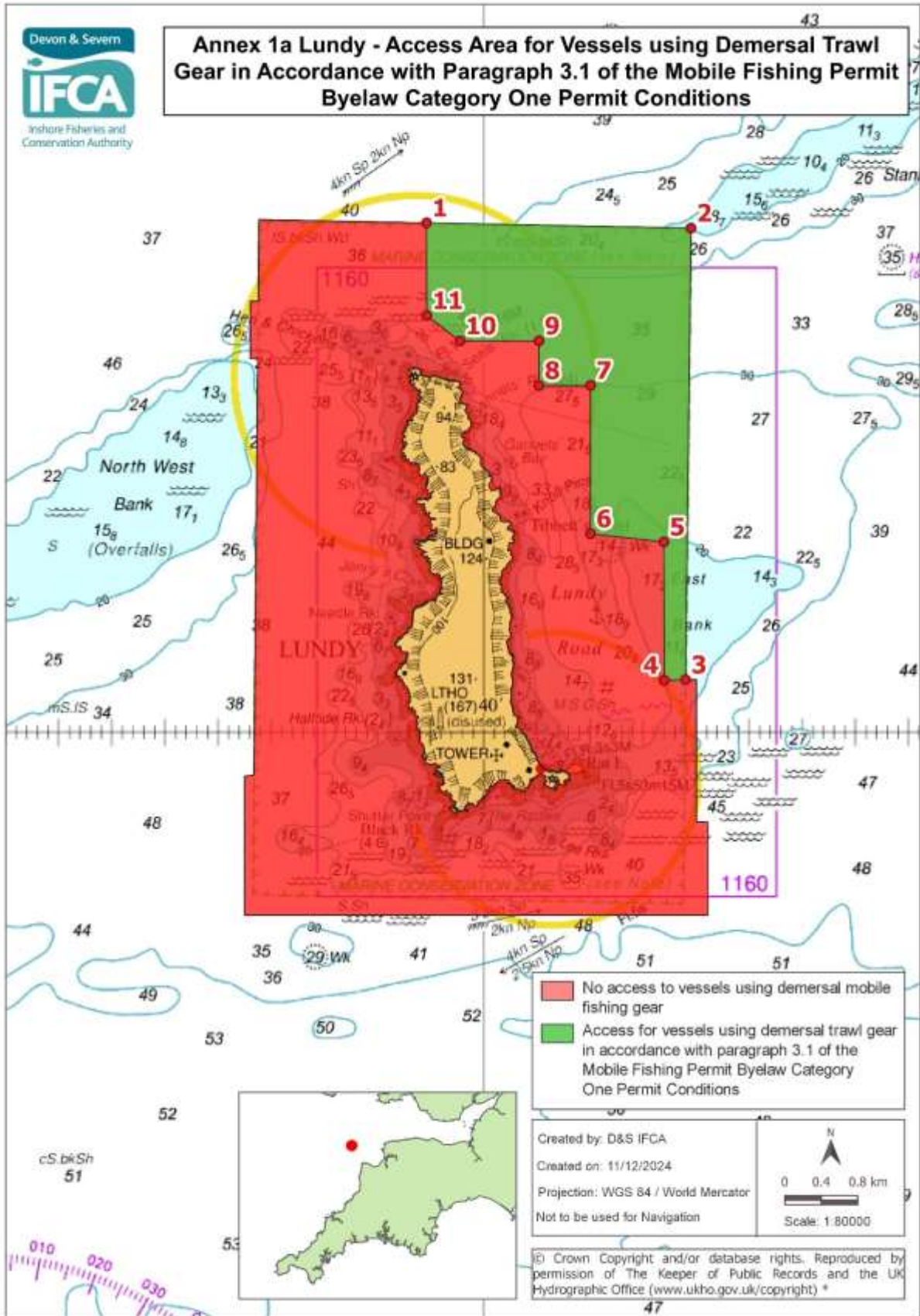
Point Number	Latitude	Longitude
1	51° 13.022 N	004° 42.116 W
2	51° 12.972 N	004° 38.049 W
3	51° 10.303 N	004° 38.100 W
4	51° 10.303 N	004° 37.998 W
5	51° 09.462 N	004° 37.998 W
6	51° 09.462 N	004° 37.890 W
7	51° 08.910 N	004° 37.890 W
8	51° 08.910 N	004° 42.252 W
9	51° 09.732 N	004° 42.252 W
10	51° 09.739 N	004° 42.164 W
11	51° 12.200 N	004° 42.128 W
12	51° 12.200 N	004° 42.198 W
13	51° 12.540 N	004° 42.198 W
14	51° 12.540 N	004° 42.123 W

*www.ukho.gov.uk/copyright

All Positions are expressed in degrees, decimal minutes (DDM) and shall be measured according to the WGS84 Geographic Co-ordinate System

Version Control: Mobile Fishing Permit Byelaw Permit Annexes December 2024

Annex 1a Lundy – Access Area for Vessels using Demersal Trawl Gear in accordance with Paragraph 3.1 of the Mobile Fishing Permit Byelaw Category One Permit Conditions.



*www.ukho.gov.uk/copyright

All Positions are expressed in degrees, decimal minutes (DDM) and shall be measured according to the WGS84 Geographic Co-ordinate System

Version Control: Mobile Fishing Permit Byelaw Permit Annexes December 2024

Access area for vessels using demersal trawl gear within the D&S IFCA District outlined by the following points plotted sequentially from Point 1 to Point 11, then returning to Point 1.

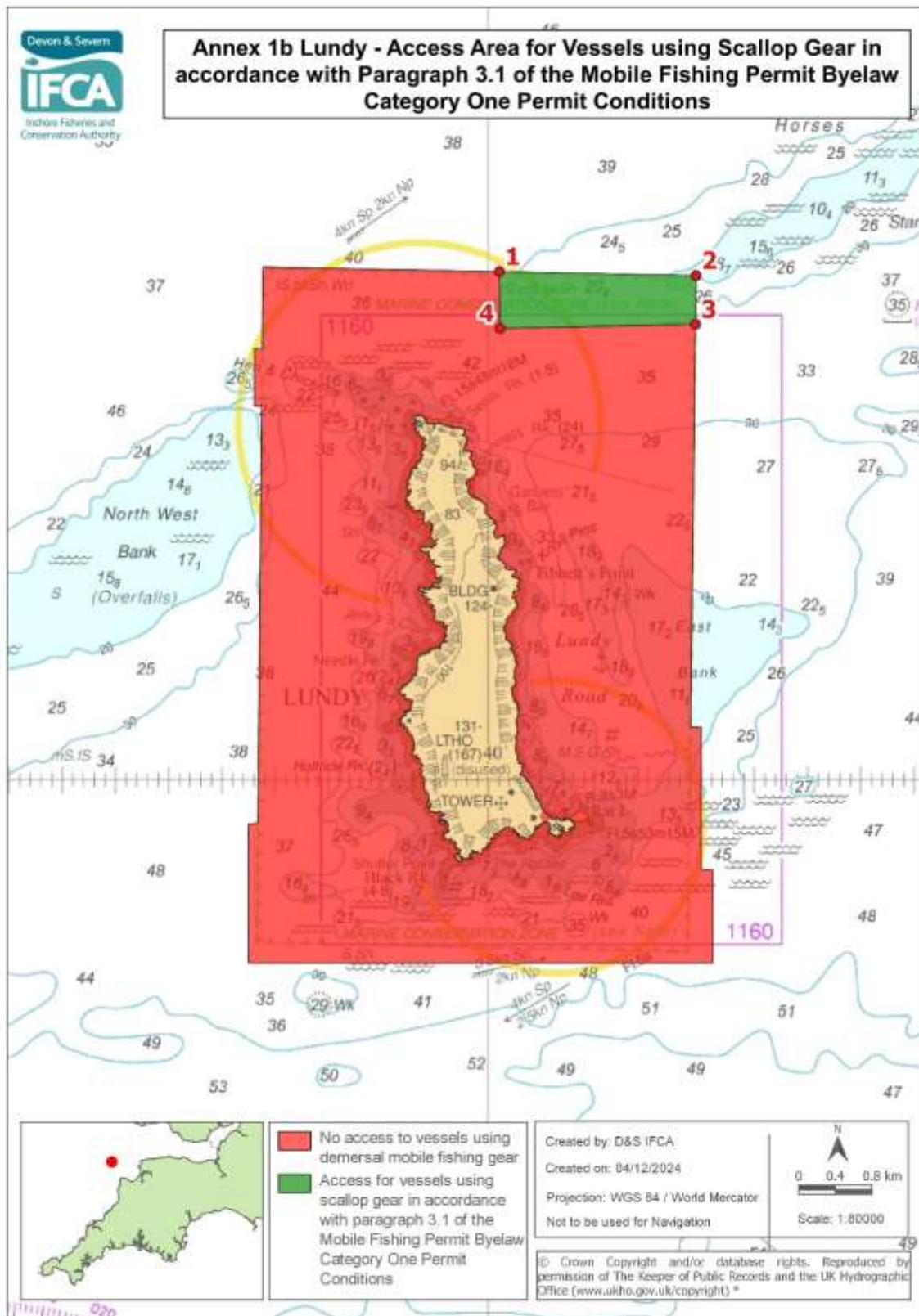
Point Number	Latitude	Longitude
1	51° 13.003 N	004° 40.538 W
2	51° 12.972 N	004° 38.049 W
3	51° 10.303 N	004° 38.100 W
4	51° 10.300 N	004° 38.300 W
5	51° 11.118 N	004° 38.304 W
6	51° 11.166 N	004° 38.994 W
7	51° 12.043 N	004° 38.994 W
8	51° 12.042 N	004° 39.480 W
9	51° 12.306 N	004° 39.480 W
10	51° 12.306 N	004° 40.224 W
11	51° 12.456 N	004° 40.536 W

*www.ukho.gov.uk/copyright

All Positions are expressed in degrees, decimal minutes (DDM) and shall be measured according to the WGS84 Geographic Co-ordinate System

Version Control: Mobile Fishing Permit Byelaw Permit Annexes December 2024

Annex 1b Lundy – Access Area for Vessels using Scallop Gear in accordance with Paragraph 3.1 of the Mobile Fishing Permit Byelaw Category One Permit Conditions.



*www.ukho.gov.uk/copyright

All Positions are expressed in degrees, decimal minutes (DDM) and shall be measured according to the WGS84 Geographic Co-ordinate System

Version Control: Mobile Fishing Permit Byelaw Permit Annexes December 2024

Access area for vessels using scallop gear within the D&S IFCA District outlined by the following points plotted sequentially from Point 1 to Point 4, then returning to Point 1.

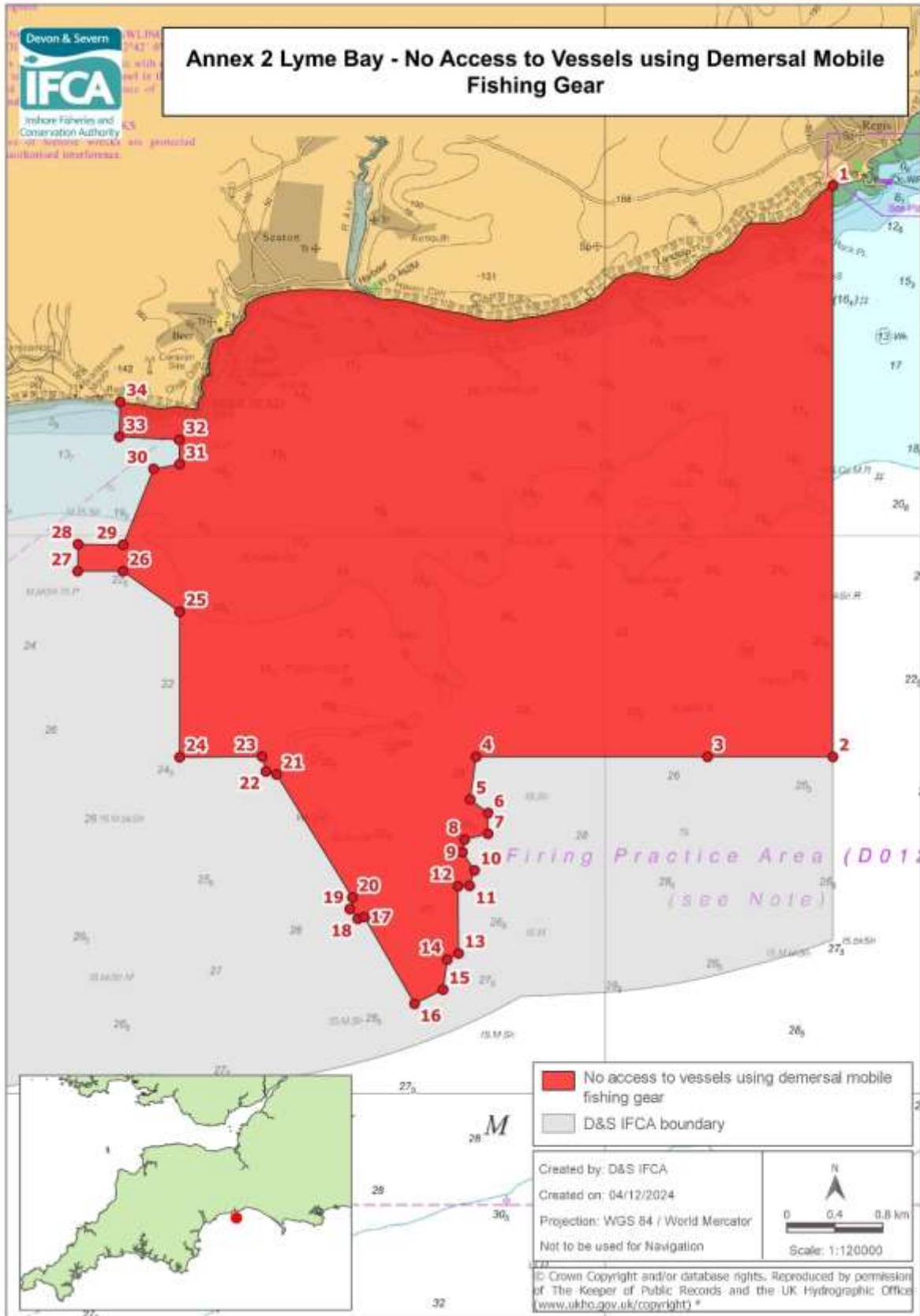
Point number	Latitude	Longitude
1	51° 12.995 N	004° 38.895 W
2	51° 12.972 N	004° 38.049 W
3	51° 12.684 N	004° 38.054 W
4	51° 12.660 N	004° 39.890 W

*www.ukho.gov.uk/copyright

All Positions are expressed in degrees, decimal minutes (DDM) and shall be measured according to the WGS84 Geographic Co-ordinate System

Version Control: Mobile Fishing Permit Byelaw Permit Annexes December 2024

Annex 2 Lyme Bay – No Access to Vessels using Demersal Mobile Fishing Gear.



*www.ukho.gov.uk/copyright

All Positions are expressed in degrees, decimal minutes (DDM) and shall be measured according to the WGS84 Geographic Co-ordinate System

Version Control: Mobile Fishing Permit Byelaw Permit Annexes December 2024

No access to vessels using demersal mobile fishing gear in the area within the D&S IFCA District outlined by the following points plotted sequentially from Point 1 to Point 34, then returning to Point 1. The landward boundary follows Mean High Water.

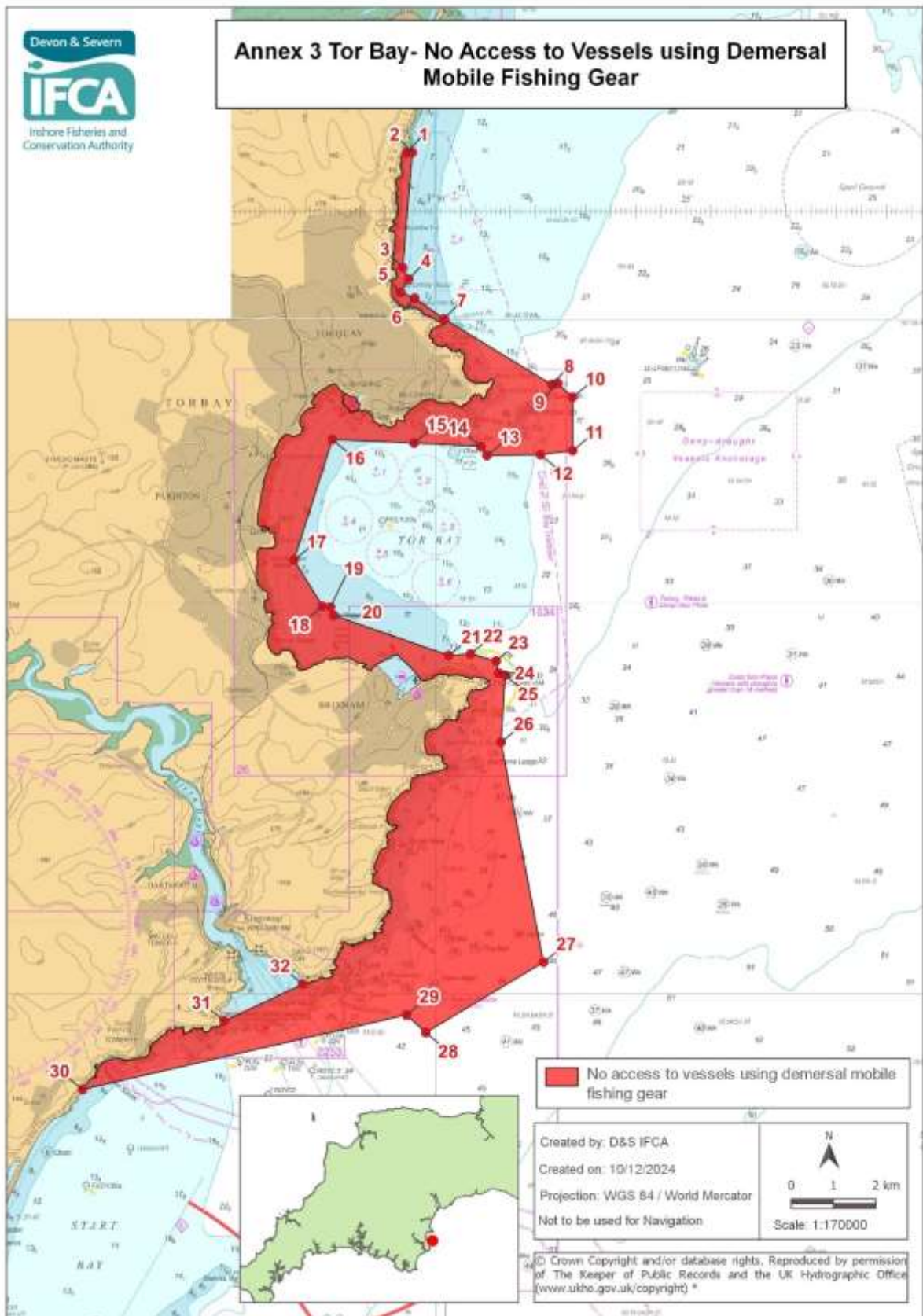
Point Number	Latitude	Longitude
1	50° 43.116 N	002° 56.782 W
2	50° 38.004 N	002° 56.782 W
3	50° 38.004 N	002° 58.551 W
4	50° 38.004 N	003° 01.817 W
5	50° 37.622 N	003° 01.901 W
6	50° 37.500 N	003° 01.648 W
7	50° 37.314 N	003° 01.648 W
8	50° 37.262 N	003° 01.980 W
9	50° 37.150 N	003° 02.009 W
10	50° 36.986 N	003° 01.839 W
11	50° 36.848 N	003° 01.908 W
12	50° 36.844 N	003° 02.071 W
13	50° 36.241 N	003° 02.064 W
14	50° 36.186 N	003° 02.223 W
15	50° 35.917 N	003° 02.283 W
16	50° 35.790 N	003° 02.686 W
17	50° 36.568 N	003° 03.393 W
18	50° 36.552 N	003° 03.485 W
19	50° 36.640 N	003° 03.598 W
20	50° 36.743 N	003° 03.562 W
21	50° 37.846 N	003° 04.632 W
22	50° 37.873 N	003° 04.782 W
23	50° 38.006 N	003° 04.835 W
24	50° 38.000 N	003° 06.000 W
25	50° 39.303 N	003° 06.000 W
26	50° 39.667 N	003° 06.800 W
27	50° 39.667 N	003° 07.438 W
28	50° 39.908 N	003° 07.433 W
29	50° 39.904 N	003° 06.796 W
30	50° 40.583 N	003° 06.367 W
31	50° 40.625 N	003° 06.000 W
32	50° 40.843 N	003° 06.006 W
33	50° 40.870 N	003° 06.851 W
34	50° 41.182 N	003° 06.836 W
Landward boundary follows Mean High Water to Point 1		

*www.ukho.gov.uk/copyright

All Positions are expressed in degrees, decimal minutes (DDM) and shall be measured according to the WGS84 Geographic Co-ordinate System

Version Control: Mobile Fishing Permit Byelaw Permit Annexes December 2024

Annex 3 Tor Bay – No Access to Vessels using Demersal Mobile Fishing Gear.



*www.ukho.gov.uk/copyright

All Positions are expressed in degrees, decimal minutes (DDM) and shall be measured according to the WGS84 Geographic Co-ordinate System

Version Control: Mobile Fishing Permit Byelaw Permit Annexes December 2024

No access to vessels using demersal mobile fishing gear in the area within the D&S IFCA District outlined by the following points plotted sequentially from Point 1 to Point 32, then returning to Point 1. The landward boundary follows Mean High Water.

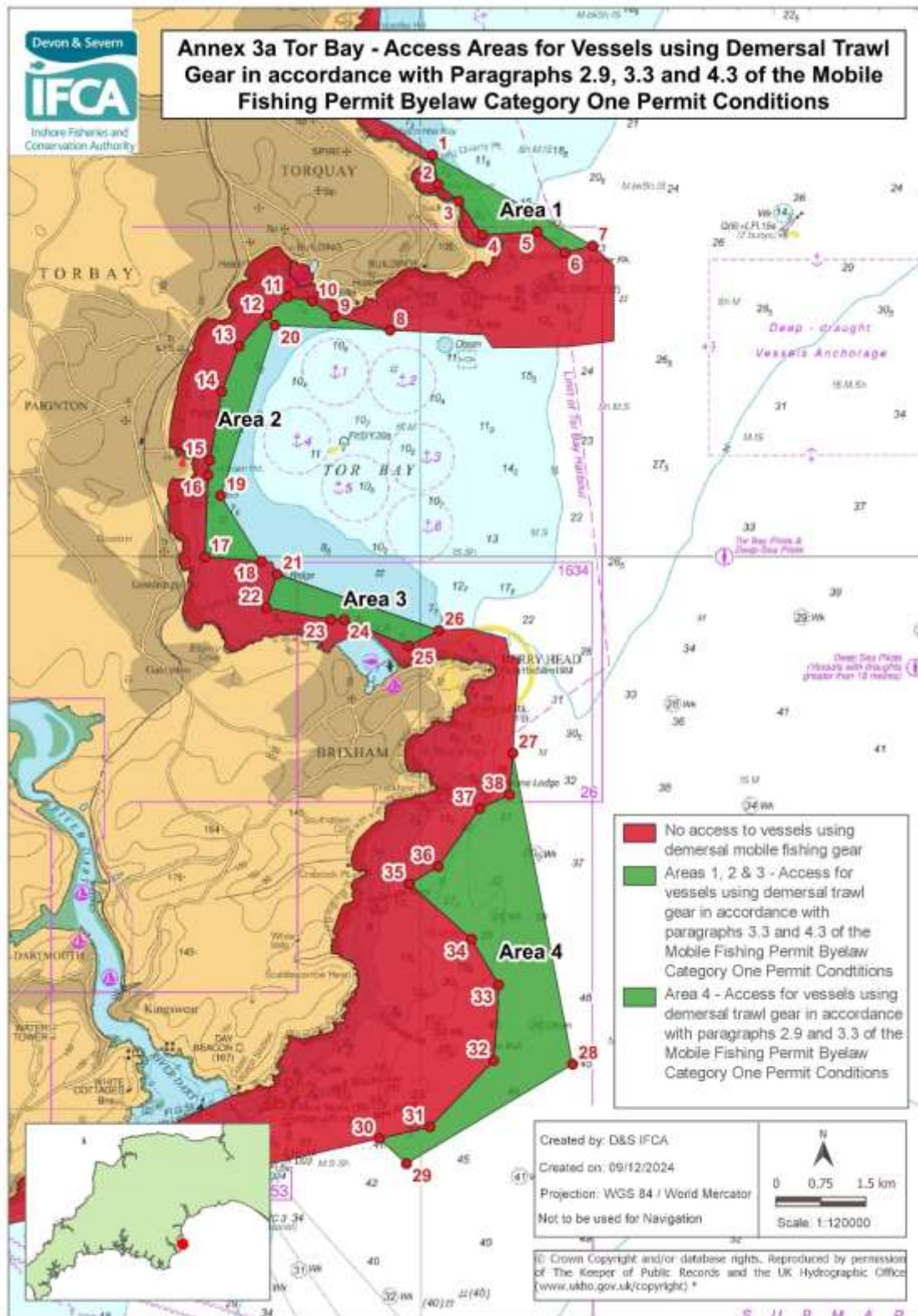
Point Number	Latitude	Longitude
1	50° 30.733 N	003° 30.585 W
2	50° 30.733 N	003° 30.467 W
3	50° 29.267 N	003° 30.659 W
4	50° 29.120 N	003° 30.541 W
5	50° 28.950 N	003° 30.700 W
6	50° 28.878 N	003° 30.420 W
7	50° 28.612 N	003° 29.832 W
8	50° 27.775 N	003° 27.685 W
9	50° 27.792 N	003° 27.568 W
10	50° 27.615 N	003° 27.270 W
11	50° 26.933 N	003° 27.267 W
12	50° 26.882 N	003° 27.911 W
13	50° 26.871 N	003° 28.979 W
14	50° 26.989 N	003° 29.100 W
15	50° 27.030 N	003° 30.432 W
16	50° 27.075 N	003° 32.062 W
17	50° 25.538 N	003° 32.827 W
18	50° 24.949 N	003° 32.258 W
19	50° 24.938 N	003° 32.098 W
20	50° 24.831 N	003° 32.035 W
21	50° 24.321 N	003° 29.741 W
22	50° 24.338 N	003° 29.307 W
23	50° 24.250 N	003° 28.796 W
24	50° 24.096 N	003° 28.745 W
25	50° 24.067 N	003° 28.613 W
26	50° 23.212 N	003° 28.696 W
27	50° 20.400 N	003° 27.850 W
28	50° 19.500 N	003° 30.200 W
29	50° 19.727 N	003° 30.583 W
30	50° 18.774 N	003° 37.047 W
Landward boundary follows Mean High Water to Point 31		
31	50° 19.648 N	003° 34.220 W
32	50° 20.121 N	003° 32.648 W
Landward Boundary follows Mean High Water to Point 1		

*www.ukho.gov.uk/copyright

All Positions are expressed in degrees, decimal minutes (DDM) and shall be measured according to the WGS84 Geographic Co-ordinate System

Version Control: Mobile Fishing Permit Byelaw Permit Annexes December 2024

Annex 3a Tor Bay – Access Areas (1, 2, 3 and 4) for Vessels using Demersal Trawl Gear in accordance with Paragraphs 2.9, 3.3 and 4.3 of the Mobile Fishing Permit Byelaw Category One Permit Conditions.



*www.ukho.gov.uk/copyright

All Positions are expressed in degrees, decimal minutes (DDM) and shall be measured according to the WGS84 Geographic Co-ordinate System

Version Control: Mobile Fishing Permit Byelaw Permit Annexes December 2024

Area 1

Access areas for demersal trawl gear within the D&S IFCA District outlined by the following points plotted sequentially from Point 1 to Point 7, then returning to Point 1.

Point Number	Latitude	Longitude
1	50° 28.612 N	003° 29.832 W
2	50° 28.347 N	003° 29.755 W
3	50° 28.194 N	003° 29.459 W
4	50° 27.891 N	003° 29.125 W
5	50° 27.920 N	003° 28.353 W
6	50° 27.731 N	003° 27.963 W
7	50° 27.792 N	003° 27.568 W

Area 2

Access areas for demersal trawl gear within the D&S IFCA District outlined by the following points plotted sequentially from Point 8 to Point 20, then returning to Point 8.

Point Number	Latitude	Longitude
8	50° 27.030 N	003° 30.432 W
9	50° 27.154 N	003° 31.214 W
10	50° 27.293 N	003° 31.533 W
11	50° 27.331 N	003° 31.878 W
12	50° 27.164 N	003° 32.169 W
13	50° 26.886 N	003° 32.564 W
14	50° 26.476 N	003° 32.814 W
15	50° 25.858 N	003° 32.980 W
16	50° 25.721 N	003° 33.007 W
17	50° 24.984 N	003° 33.050 W
18	50° 24.946 N	003° 32.250 W
19	50° 25.537 N	003° 32.827 W
20	50° 27.075 N	003° 32.062 W

*www.ukho.gov.uk/copyright

All Positions are expressed in degrees, decimal minutes (DDM) and shall be measured according to the WGS84 Geographic Co-ordinate System

Version Control: Mobile Fishing Permit Byelaw Permit Annexes December 2024

Area 3

Access areas for demersal trawl gear within the D&S IFCA District outlined by the following points plotted sequentially from Point 21 to Point 26, then returning to Point 21

Point Number	Latitude	Longitude
21	50° 24.828 N	003° 32.027 W
22	50° 24.525 N	003° 32.183 W
23	50° 24.418 N	003° 31.268 W
24	50° 24.416 N	003° 31.082 W
25	50° 24.181 N	003° 30.171 W
26	50° 24.321 N	003° 29.741 W

Area 4

Access areas for demersal trawl gear within the D&S IFCA District outlined by the following points plotted sequentially from Point 27 to Point 38, then returning to Point 27.

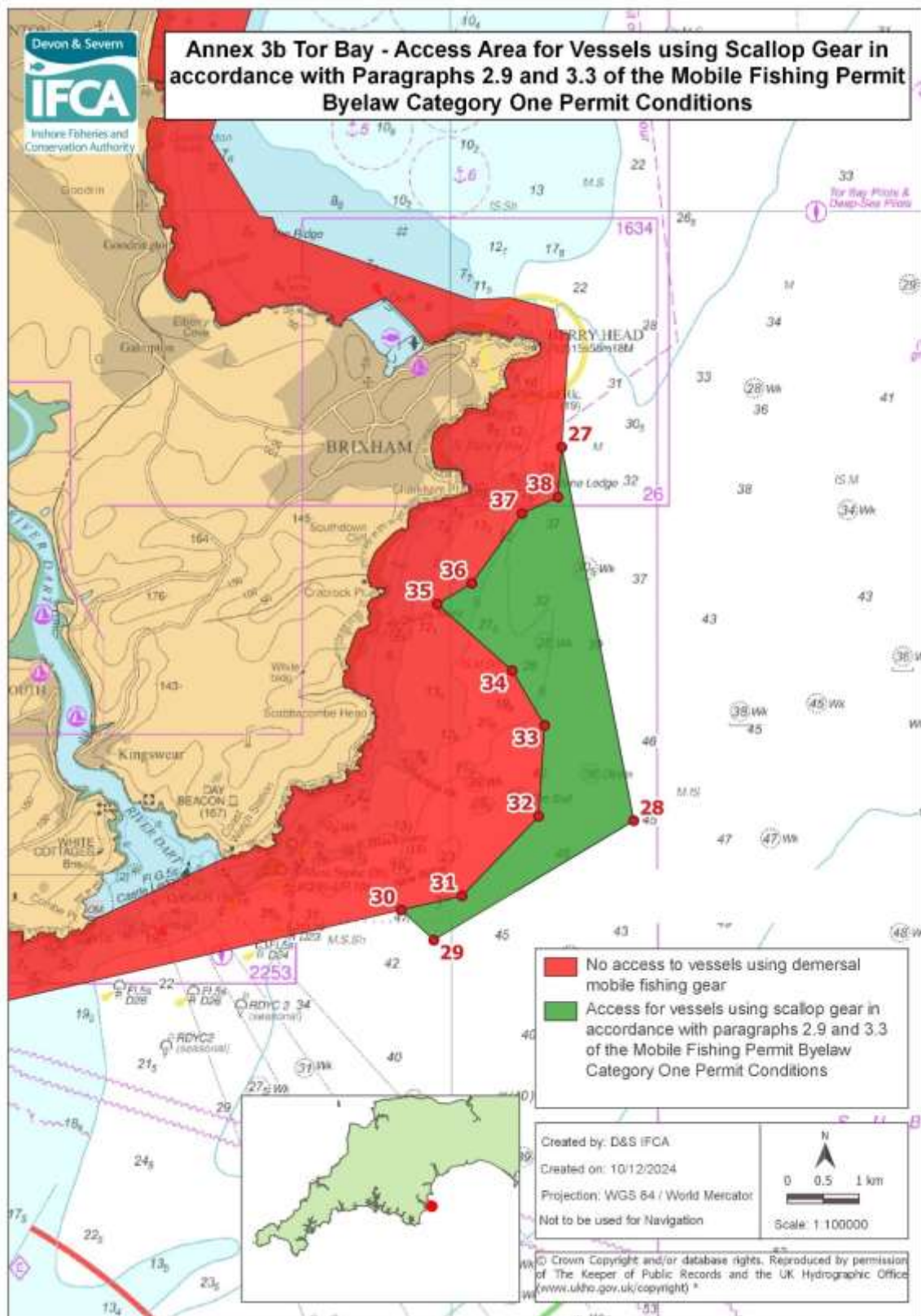
Point Number	Latitude	Longitude
27	50° 23.212 N	003° 28.696 W
28	50° 20.400 N	003° 27.850 W
29	50° 19.500 N	003° 30.200 W
30	50° 19.727 N	003° 30.583 W
31	50° 19.833 N	003° 29.867 W
32	50° 20.433 N	003° 28.967 W
33	50° 21.118 N	003° 28.898 W
34	50° 21.531 N	003° 29.279 W
35	50° 22.031 N	003° 30.160 W
36	50° 22.187 N	003° 29.752 W
37	50° 22.713 N	003° 29.163 W
38	50° 22.836 N	003° 28.740 W

*www.ukho.gov.uk/copyright

All Positions are expressed in degrees, decimal minutes (DDM) and shall be measured according to the WGS84 Geographic Co-ordinate System

Version Control: Mobile Fishing Permit Byelaw Permit Annexes December 2024

Annex 3b Tor Bay – Access Area for Vessels using Scallop Gear in accordance with Paragraphs 2.9 and 3.3 of the Mobile Fishing Permit Byelaw Category One Permit Conditions.



*www.ukho.gov.uk/copyright

All Positions are expressed in degrees, decimal minutes (DDM) and shall be measured according to the WGS84 Geographic Co-ordinate System

Version Control: Mobile Fishing Permit Byelaw Permit Annexes December 2024

Access area for scallop gear within the D&S IFCA District outlined by the following points plotted sequentially from Point 27 to Point 38, then returning to Point 27.

Point number	Latitude	Longitude
27	50° 23.212 N	003° 28.696 W
28	50° 20.400 N	003° 27.850 W
29	50° 19.500 N	003° 30.200 W
30	50° 19.727 N	003° 30.583 W
31	50° 19.833 N	003° 29.867 W
32	50° 20.433 N	003° 28.967 W
33	50° 21.118 N	003° 28.898 W
34	50° 21.531 N	003° 29.279 W
35	50° 22.031 N	003° 30.160 W
36	50° 22.187 N	003° 29.752 W
37	50° 22.713 N	003° 29.163 W
38	50° 22.836 N	003° 28.740 W

*www.ukho.gov.uk/copyright

All Positions are expressed in degrees, decimal minutes (DDM) and shall be measured according to the WGS84 Geographic Co-ordinate System

Version Control: Mobile Fishing Permit Byelaw Permit Annexes December 2024

Annex 4 Plymouth Sound and Estuaries - No Access to Vessels using Demersal Mobile Fishing Gear.



*www.ukho.gov.uk/copyright

All Positions are expressed in degrees, decimal minutes (DDM) and shall be measured according to the WGS84 Geographic Co-ordinate System

Version Control: Mobile Fishing Permit Byelaw Permit Annexes December 2024

No access to vessels using demersal mobile fishing gear within the D&S IFCA District landward of a line drawn between Points 1 and 2. The landward boundary follows Mean High Water.

Point	Latitude	Longitude
1	50° 18.484 N	004° 09.600 W
2	50° 18.192 N	004° 04.458 W

*www.ukho.gov.uk/copyright

All Positions are expressed in degrees, decimal minutes (DDM) and shall be measured according to the WGS84 Geographic Co-ordinate System

Version Control: Mobile Fishing Permit Byelaw Permit Annexes December 2024

Access area for vessels using encircling nets within the D&S IFCA District outlined by the following points plotted sequentially from Point 1 to Point 11, then returning to Point 1. The landward boundary follows Mean High Water.

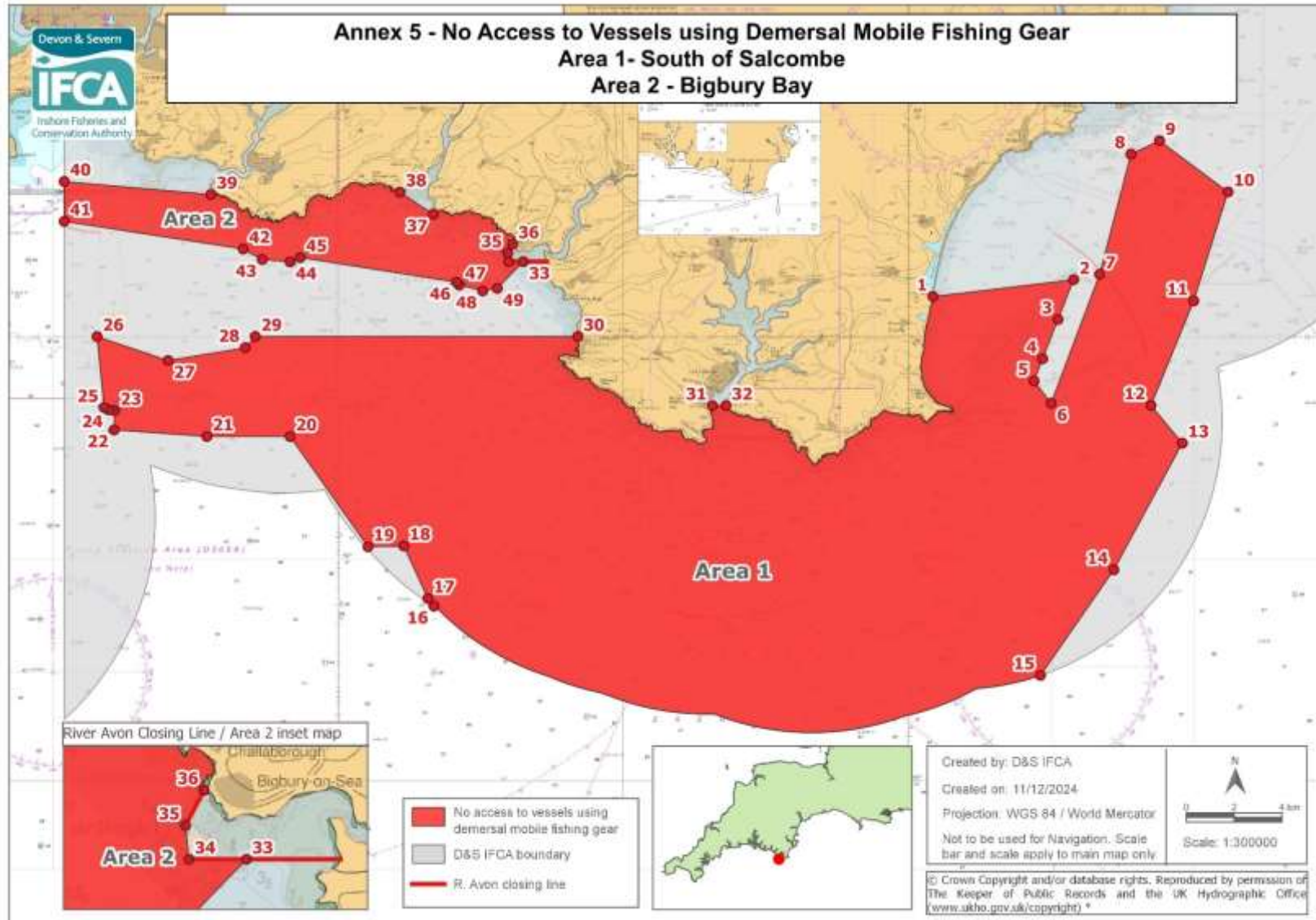
Point Number	Latitude	Longitude
1	50° 20.023 N	004° 08.231 W
2	50° 20.061 N	004° 08.192 W
3	50° 19.692 N	004° 07.319 W
Landward boundary to follow mean high water to Point 4		
4	50° 21.562 N	004° 07.902 W
5	50° 21.562 N	004° 08.120 W
6	50° 21.730 N	004° 08.127 W
7	50° 21.708 N	004° 08.304 W
8	50° 21.687 N	004° 09.002 W
9	50° 21.246 N	004° 09.002 W
10	50° 21.000 N	004° 09.600 W
11	50° 20.023 N	004° 09.600 W

*www.ukho.gov.uk/copyright

All Positions are expressed in degrees, decimal minutes (DDM) and shall be measured according to the WGS84 Geographic Co-ordinate System

Version Control: Mobile Fishing Permit Byelaw Permit Annexes December 2024

Annex 5 – No Access for Vessels using Demersal Mobile Fishing Gear.



*www.ukho.gov.uk/copyright

All Positions are expressed in degrees, decimal minutes (DDM) and shall be measured according to the WGS84 Geographic Co-ordinate System

Version Control: Mobile Fishing Permit Byelaw Permit Annexes December 2024

Area 1 - South of Salcombe

No access to vessels using demersal mobile fishing gear in the area within the D&S IFCA District outlined by the following points plotted sequentially from Point 1 to Point 32, then returning to Point 1. The landward boundary follows Mean High Water.

Point Number	Latitude	Longitude
1	50° 15.897 N	003° 39.141 W
2	50° 16.278 N	003° 34.212 W
3	50° 15.384 N	003° 34.758 W
4	50° 14.502 N	003° 35.298 W
5	50° 13.998 N	003° 35.598 W
6	50° 13.500 N	003° 35.000 W
7	50° 16.400 N	003° 33.300 W
8	50° 19.100 N	003° 32.200 W
9	50° 19.400 N	003° 31.200 W
10	50° 18.250 N	003° 28.800 W
11	50° 15.800 N	003° 30.000 W
12	50° 13.450 N	003° 31.500 W
13	50° 12.600 N	003° 30.400 W
14	50° 09.750 N	003° 32.800 W
15	50° 07.368 N	003° 35.373 W
Then follow the Six Nautical Mile Limit to Point 16		
16	50° 08.930 N	003° 56.640 W
17	50° 09.100 N	003° 56.850 W
18	50° 10.284 N	003° 57.696 W
19	50° 10.267 N	003° 58.950 W
20	50° 12.750 N	004° 01.683 W
21	50° 12.750 N	004° 04.600 W
22	50° 12.900 N	004° 07.850 W
23	50° 13.334 N	004° 07.836 W
24	50° 13.352 N	004° 08.043 W
25	50° 13.400 N	004° 08.200 W
26	50° 15.000 N	004° 08.450 W
27	50° 14.460 N	004° 05.958 W
28	50° 14.748 N	004° 03.251 W
29	50° 15.000 N	004° 02.900 W
30	50° 15.000 N	003° 51.590 W
Landward boundary follows Mean High Water to Point 31		
31	50° 13.444 N	003° 46.871 W
32	50° 13.444 N	003° 46.402 W
Landward boundary follows Mean High Water to Point 1		

*www.ukho.gov.uk/copyright

All Positions are expressed in degrees, decimal minutes (DDM) and shall be measured according to the WGS84 Geographic Co-ordinate System

Version Control: Mobile Fishing Permit Byelaw Permit Annexes December 2024

Area 2 - Bigbury Bay

No access to vessels using demersal mobile fishing gear in the area within the D&S IFCA District outlined by the following points plotted sequentially from Point 33 to Point 49, then returning to Point 33. The landward boundary follows Mean High Water.

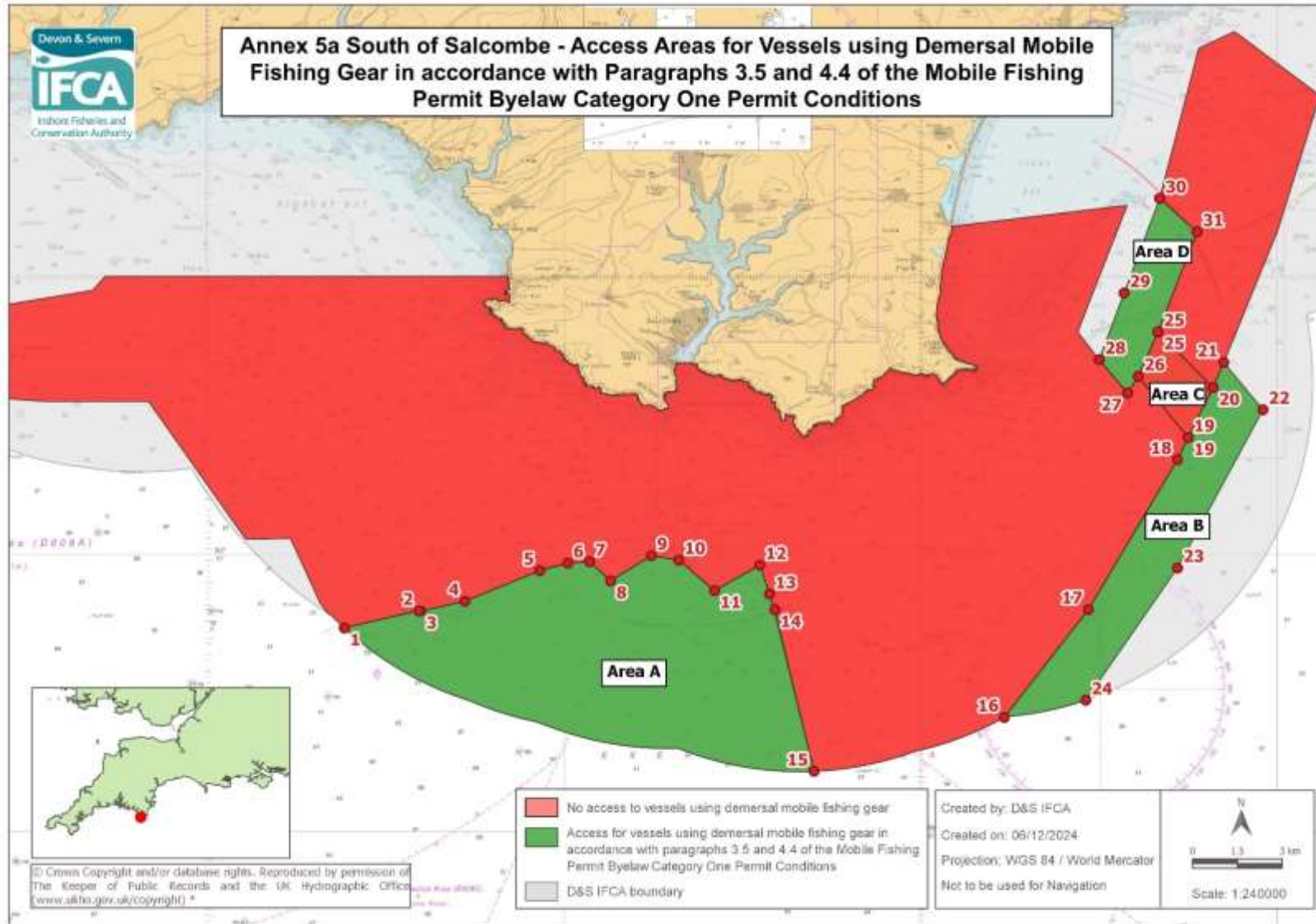
Point Number	Latitude	Longitude
33	50° 16.684 N	003° 53.508 W
34	50° 16.684 N	003° 54.018 W
35	50° 16.876 N	003° 54.049 W
36	50° 17.077 N	003° 53.884 W
Landward boundary follows Mean High Water to Point 37		
37	50° 17.750 N	003° 56.657 W
38	50° 18.243 N	003° 57.834 W
Landward boundary follows Mean High Water to Point 39		
39	50° 18.191 N	004° 04.460 W
40	50° 18.484 N	004° 09.600 W
41	50° 17.588 N	004° 09.600 W
42	50° 16.967 N	004° 03.323 W
43	50° 16.734 N	004° 02.658 W
44	50° 16.678 N	004° 01.685 W
45	50° 16.775 N	004° 01.328 W
46	50° 16.222 N	003° 55.848 W
47	50° 16.158 N	003° 55.749 W
48	50° 16.026 N	003° 54.930 W
49	50° 16.083 N	003° 54.417 W

*www.ukho.gov.uk/copyright

All Positions are expressed in degrees, decimal minutes (DDM) and shall be measured according to the WGS84 Geographic Co-ordinate System

Version Control: Mobile Fishing Permit Byelaw Permit Annexes December 2024

Annex 5a – Access Areas (A, B, C and D) for Vessels using Demersal Mobile Fishing Gear in accordance with Paragraphs 3.5 and 4.4 of the Mobile Fishing Permit Byelaw Category One Permit Conditions.



*www.ukho.gov.uk/copyright

All Positions are expressed in degrees, decimal minutes (DDM) and shall be measured according to the WGS84 Geographic Co-ordinate System

Version Control: Mobile Fishing Permit Byelaw Permit Annexes December 2024

Area A

Access area, for the period specified in Permit Condition 4.4 as set out in table 1 below, for vessels using demersal mobile fishing gear within the D&S IFCA District outlined by the following points plotted sequentially from Point 1 to Point 15, then returning to Point 1.

Point Number	Latitude	Longitude
1	50° 08.669 N	003° 56.186 W
2	50° 08.977 N	003° 54.092 W
3	50° 08.973 N	003° 54.046 W
4	50° 09.150 N	003° 52.800 W
5	50° 09.702 N	003° 50.700 W
6	50° 09.835 N	003° 49.915 W
7	50° 09.863 N	003° 49.300 W
8	50° 09.517 N	003° 48.711 W
9	50° 09.972 N	003° 47.568 W
10	50° 09.892 N	003° 46.798 W
11	50° 09.343 N	003° 45.795 W
12	50° 09.800 N	003° 44.525 W
13	50° 09.279 N	003° 44.248 W
14	50° 09.000 N	003° 44.100 W
15	50° 06.084 N	003° 43.000 W
Then follow the six nautical mile limit to Point 1		

Area B

Access area, for the period specified in Permit Condition 4.4 as set out in table 1 below, for vessels using demersal mobile fishing gear within the D&S IFCA District outlined by the following points plotted sequentially from Point 16 to Point 24, then returning to Point 16.

Point Number	Latitude	Longitude
16	50° 07.057 N	003° 37.660 W
17	50° 09.000 N	003° 35.300 W
18	50° 11.700 N	003° 32.800 W
19	50° 12.100 N	003° 32.500 W
20	50° 13.000 N	003° 31.800 W
21	50° 13.450 N	003° 31.500 W
22	50° 12.600 N	003° 30.400 W
23	50° 09.750 N	003° 32.800 W
24	50° 07.368 N	003° 35.373 W
Then follow the six nautical mile limit to Point 16		

*www.ukho.gov.uk/copyright

All Positions are expressed in degrees, decimal minutes (DDM) and shall be measured according to the WGS84 Geographic Co-ordinate System

Version Control: Mobile Fishing Permit Byelaw Permit Annexes December 2024

Area C

Access area for the period specified in Permit Condition 4.4 as set out in table 1 below, for vessels using demersal mobile fishing gear within the D&S IFCA District outlined by the following points plotted from Point 19 to Point 20, then to Point 25 and on to Point 26, then returning to Point 19.

Point Number	Latitude	Longitude
19	50° 12.100 N	003° 32.500 W
20	50° 13.000 N	003° 31.800 W
25	50° 14.000 N	003° 33.350 W
26	50° 13.200 N	003° 33.900 W

Area D

Access area, for the period specified in Permit Condition 4.4 as set out in table 1 below, for vessels using demersal mobile fishing gear within the D&S IFCA District outlined by the following points plotted sequentially from Point 25 to Point 31, then returning to Point 25.

Point Number	Latitude	Longitude
25	50° 14.000 N	003° 33.350 W
26	50° 13.200 N	003° 33.900 W
27	50° 12.900 N	003° 34.200 W
28	50° 13.500 N	003° 35.000 W
29	50° 14.700 N	003° 34.300 W
30	50° 16.400 N	003° 33.300 W
31	50° 15.800 N	003° 32.250 W

Permit Condition 4.4 Table 1

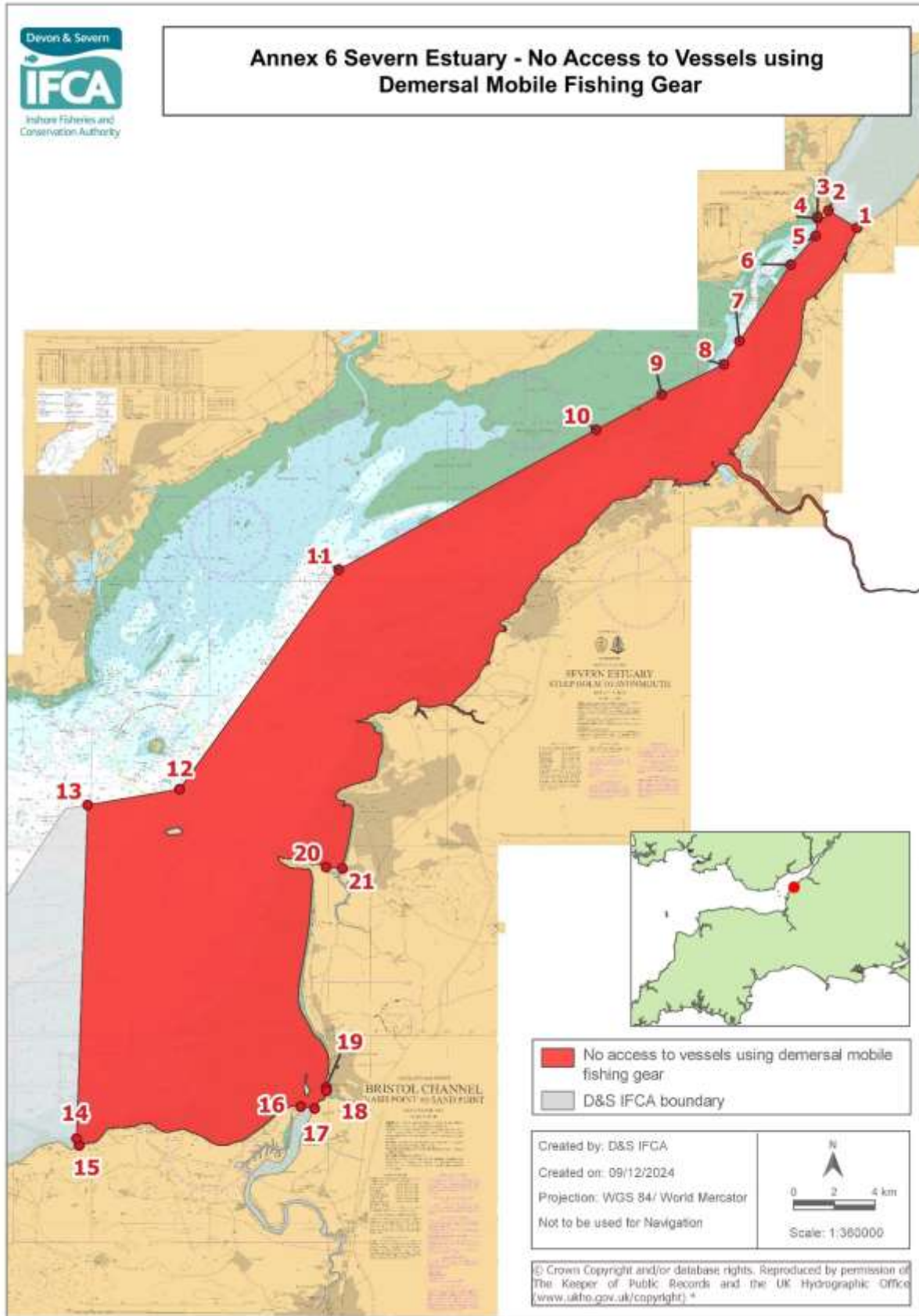
Annex	Sub Area of Annex 5a	Annual Access dates
5a	Area A	1 st Jan to 31 st May inclusive
5a	Area B	1 st Jan to 31 st March inclusive
5a	Area C	NO ACCESS
5a	Area D	1 st Feb to 31 st Aug inclusive

*www.ukho.gov.uk/copyright

All Positions are expressed in degrees, decimal minutes (DDM) and shall be measured according to the WGS84 Geographic Co-ordinate System

Version Control: Mobile Fishing Permit Byelaw Permit Annexes December 2024

Annex 6 Severn Estuary – No Access to Vessels using Demersal Mobile Fishing Gear.



*www.ukho.gov.uk/copyright

All Positions are expressed in degrees, decimal minutes (DDM) and shall be measured according to the WGS84 Geographic Co-ordinate System

Version Control: Mobile Fishing Permit Byelaw Permit Annexes December 2024

No access to vessels using demersal mobile fishing gear in the area within the D&S IFCA District outlined by the following points plotted sequentially from Point 1 to Point 21, then returning to Point 1. The landward boundary follows Mean High Water.

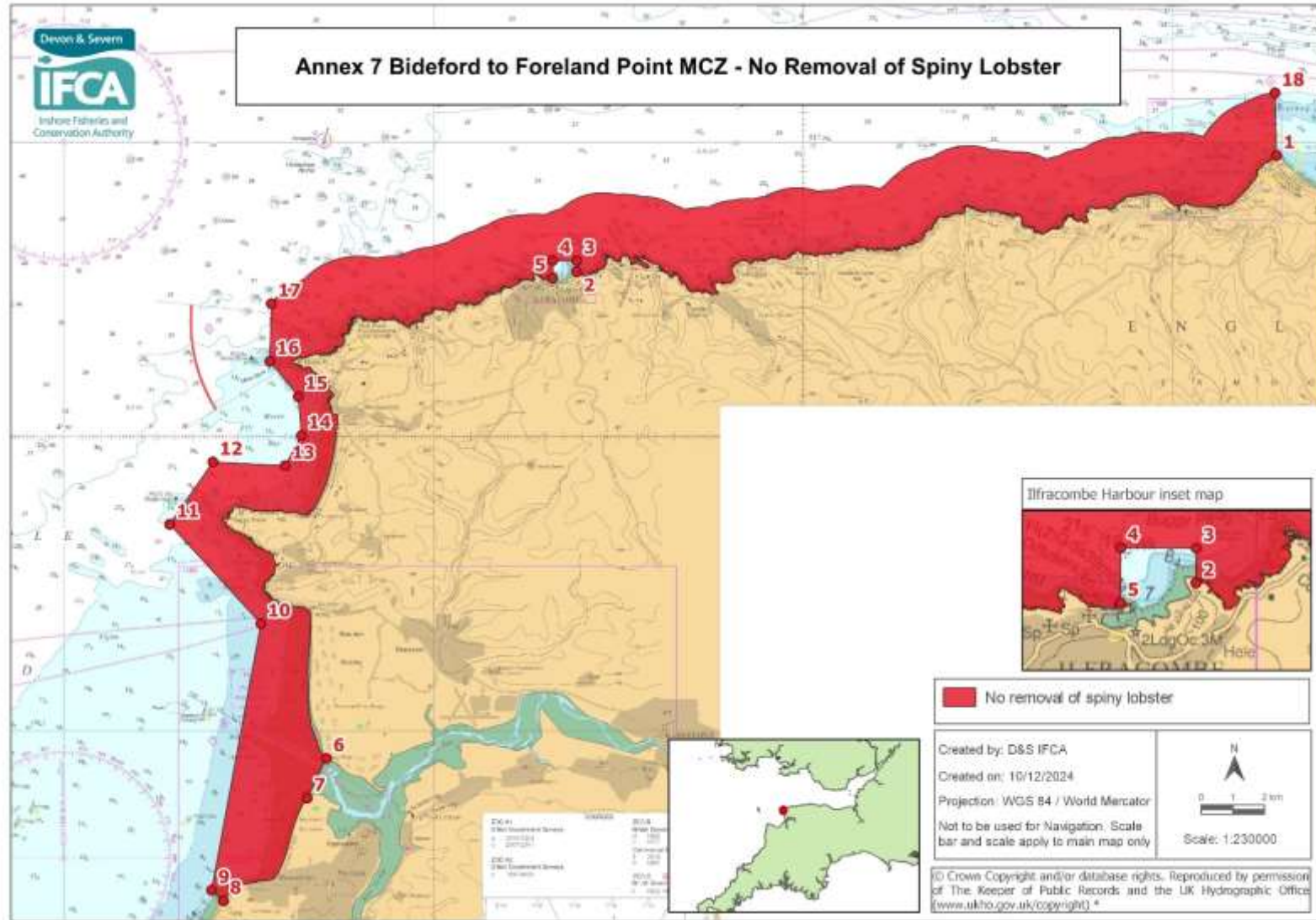
Point Number	Latitude	Longitude
1	51° 36.310 N	002° 37.696 W
2	51° 36.769 N	002° 38.898 W
Landward boundary follows Mean High Water to Point 3		
3	51° 36.608 N	002° 39.358 W
4	51° 36.568 N	002° 39.364 W
5	51° 36.102 N	002° 39.436 W
6	51° 35.342 N	002° 40.494 W
7	51° 33.335 N	002° 42.655 W
8	51° 32.722 N	002° 43.314 W
9	51° 31.927 N	002° 45.944 W
10	51° 30.997 N	002° 48.710 W
11	51° 27.306 N	002° 59.584 W
12	51° 21.512 N	003° 06.293 W
13	51° 21.092 N	003° 10.173 W
14	51° 12.256 N	003° 10.641 W
15	51° 12.072 N	003° 10.532 W
Landward boundary follows Mean High Water to Point 16		
16	51° 13.106 N	003° 01.177 W
17	51° 13.056 N	003° 00.595 W
Landward boundary follows Mean High Water to Point 18		
18	51° 13.528 N	003° 00.091 W
19	51° 13.618 N	003° 00.091 W
Landward boundary follows Mean High Water to Point 20		
20	51° 19.450 N	003° 00.108 W
21	51° 19.417 N	002° 59.418 W
Landward boundary follows Mean High Water to Point 1		

*www.ukho.gov.uk/copyright

All Positions are expressed in degrees, decimal minutes (DDM) and shall be measured according to the WGS84 Geographic Co-ordinate System

Version Control: Mobile Fishing Permit Byelaw Permit Annexes December 2024

Annex 7 Bideford to Foreland Point MCZ – No Removal of Spiny Lobster.



*www.ukho.gov.uk/copyright

All Positions are expressed in degrees, decimal minutes (DDM) and shall be measured according to the WGS84 Geographic Co-ordinate System

Version Control: Mobile Fishing Permit Byelaw Permit Annexes December 2024

No removal of spiny lobster in the area within the D&S IFCA District outlined by the following points plotted sequentially from Point 1 to Point 18, then returning to Point 1. The landward boundary follows Mean High Water.

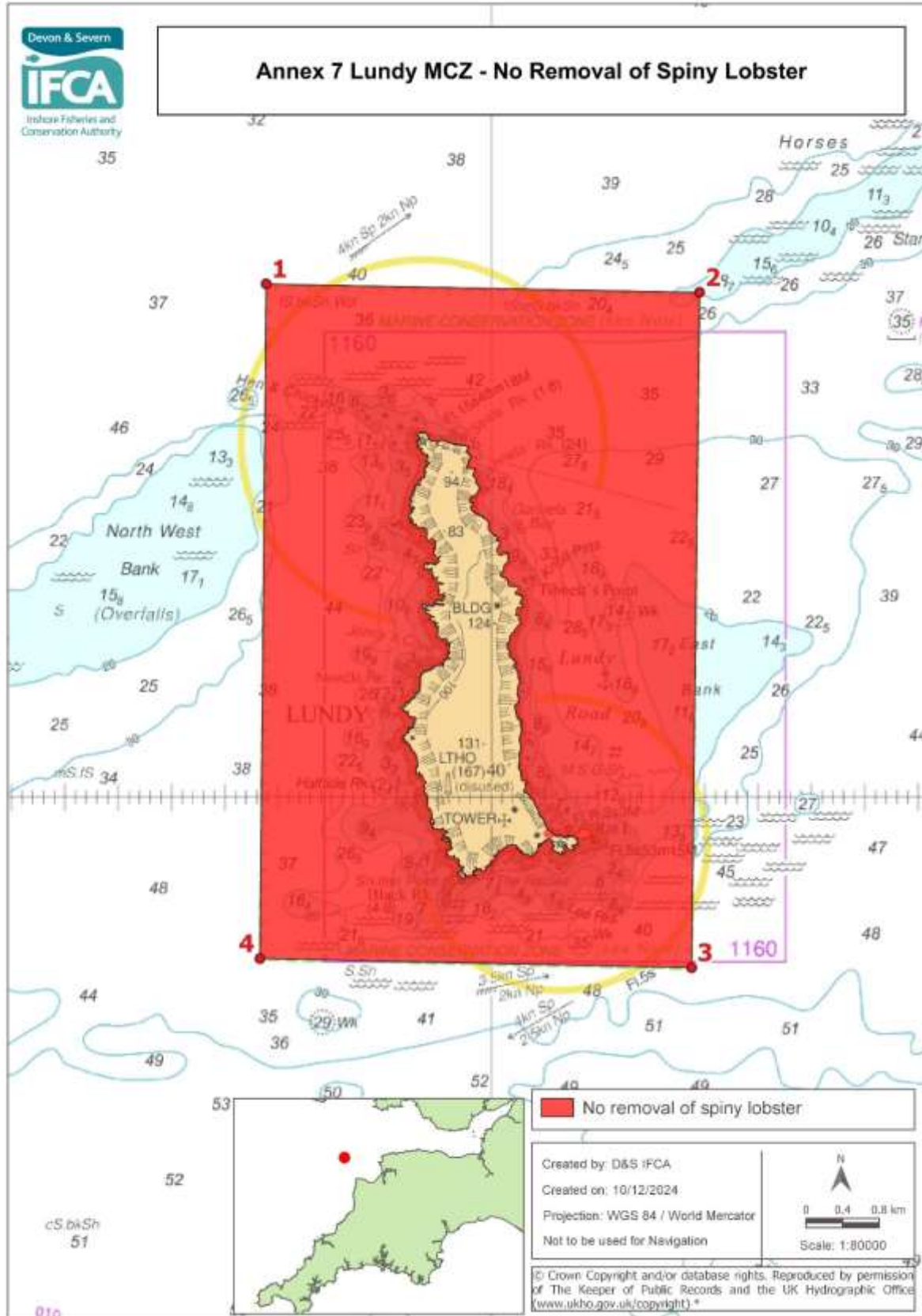
Point Number	Latitude	Longitude
1	51° 14.764 N	003° 47.204 W
Landward boundary follows Mean High Water to Point 2		
2	51° 12.792 N	004° 06.130 W
3	51° 12.980 N	004° 06.126 W
4	51° 12.983 N	004° 06.778 W
5	51° 12.683 N	004° 06.778 W
Landward boundary follows Mean High Water to Point 6		
6	51° 04.524 N	004° 12.897 W
7	51° 03.849 N	004° 13.416 W
Landward boundary follows Mean High Water to Point 8		
8	51° 02.098 N	004° 15.685 W
9	51° 02.281 N	004° 16.001 W
10	51° 06.816 N	004° 14.667 W
11	51° 08.505 N	004° 17.135 W
12	51° 09.563 N	004° 15.967 W
13	51° 09.499 N	004° 14.015 W
14	51° 10.011 N	004° 13.570 W
15	51° 10.676 N	004° 13.655 W
16	51° 11.274 N	004° 14.426 W
17	51° 12.250 N	004° 14.385 W
Seaward boundary follows a one nautical mile line from Mean High Water to Point 18		
18	51° 15.825 N	003° 47.244 W

*www.ukho.gov.uk/copyright

All Positions are expressed in degrees, decimal minutes (DDM) and shall be measured according to the WGS84 Geographic Co-ordinate System

Version Control: Mobile Fishing Permit Byelaw Permit Annexes December 2024

Annex 7 Lundy MCZ – No Removal of Spiny Lobster.



*www.ukho.gov.uk/copyright

All Positions are expressed in degrees, decimal minutes (DDM) and shall be measured according to the WGS84 Geographic Co-ordinate System

Version Control: Mobile Fishing Permit Byelaw Permit Annexes December 2024

No removal of spiny lobster in the area within the D&S IFCA District outlined by the following points plotted sequentially from Point 1 to Point 4, then returning to Point 1.

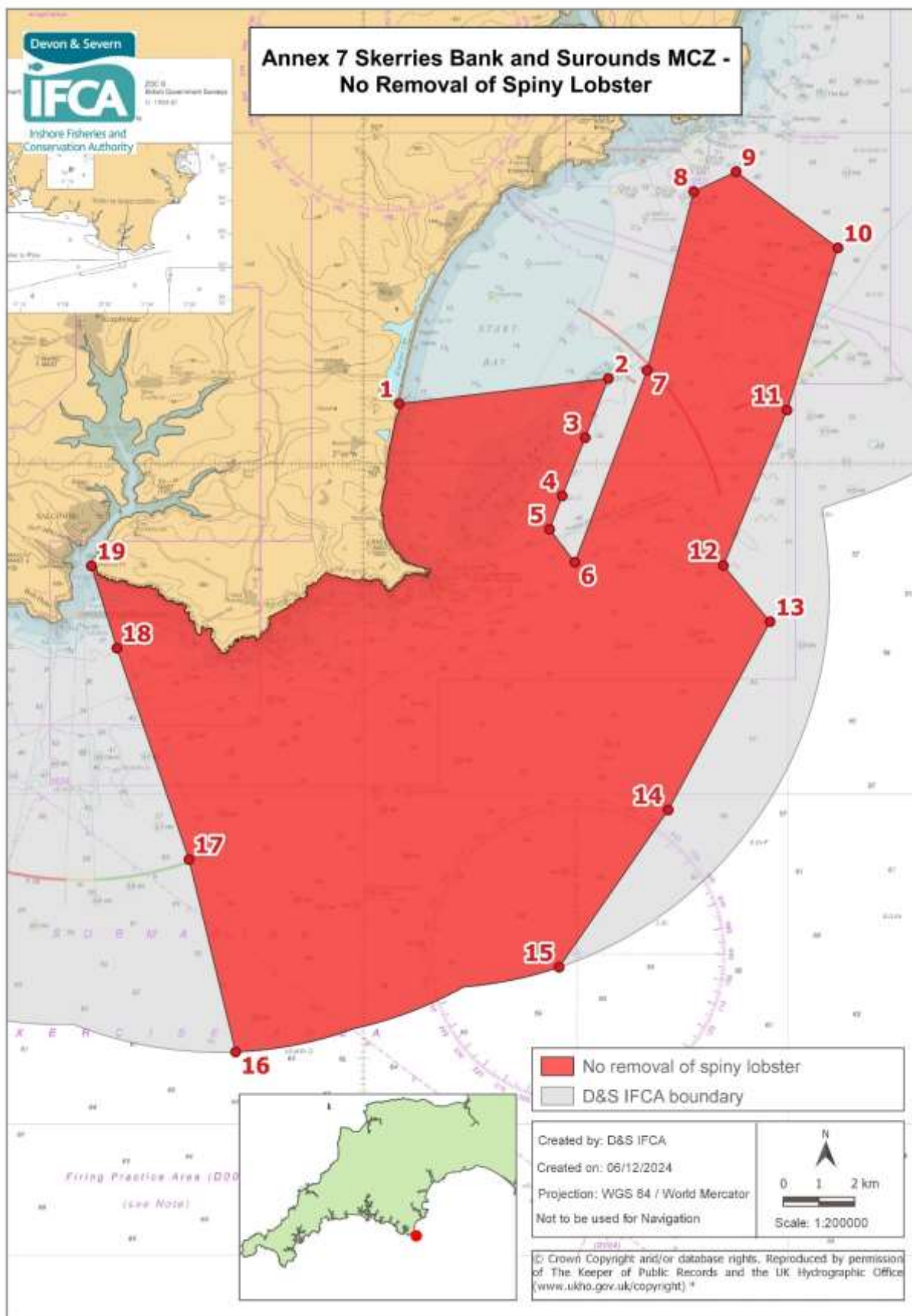
Point Number	Latitude	Longitude
1	51° 13.022 N	004° 42.113 W
2	51° 12.972 N	004° 38.049 W
3	51° 08.986 N	004° 38.123 W
4	51° 09.040 N	004° 42.172 W

*www.ukho.gov.uk/copyright

All Positions are expressed in degrees, decimal minutes (DDM) and shall be measured according to the WGS84 Geographic Co-ordinate System

Version Control: Mobile Fishing Permit Byelaw Permit Annexes December 2024

Annex 7 Skerries Bank and Surrounds MCZ – No Removal of Spiny Lobster



*www.ukho.gov.uk/copyright

All Positions are expressed in degrees, decimal minutes (DDM) and shall be measured according to the WGS84 Geographic Co-ordinate System

Version Control: Mobile Fishing Permit Byelaw Permit Annexes December 2024

No removal of spiny lobster in the area within the D&S IFCA District outlined by the following points plotted sequentially from Point 1 to Point 19, then returning to Point 1. The landward boundary follows Mean High Water.

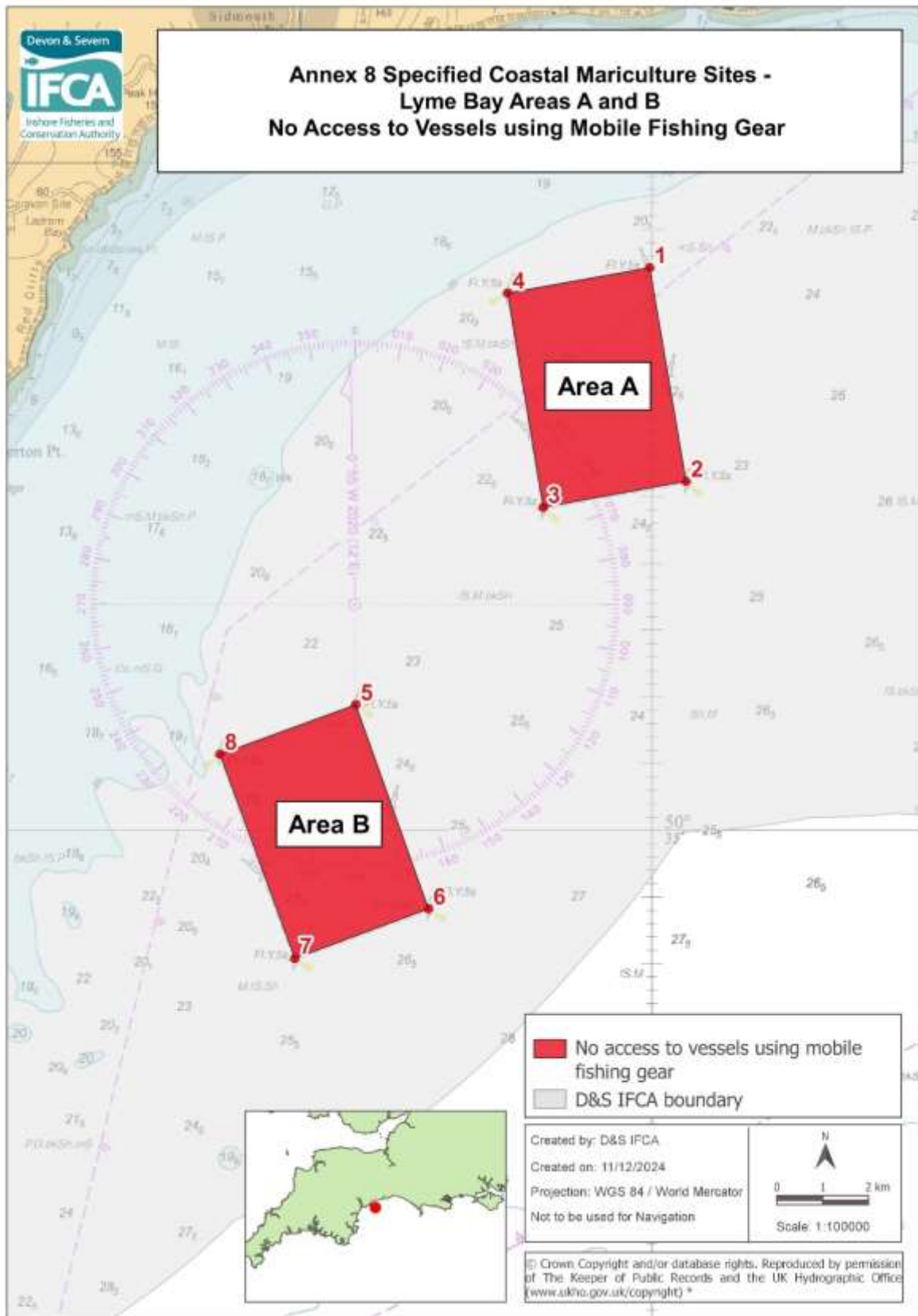
Point Number	Latitude	Longitude
1	50° 15.897 N	003° 39.141 W
2	50° 16.278 N	003° 34.212 W
3	50° 15.384 N	003° 34.758 W
4	50° 14.502 N	003° 35.298 W
5	50° 13.998 N	003° 35.598 W
6	50° 13.500 N	003° 35.000 W
7	50° 16.400 N	003° 33.300 W
8	50° 19.100 N	003° 32.200 W
9	50° 19.400 N	003° 31.200 W
10	50° 18.250 N	003° 28.800 W
11	50° 15.800 N	003° 30.000 W
12	50° 13.450 N	003° 31.500 W
13	50° 12.600 N	003° 30.400 W
14	50° 09.750 N	003° 32.800 W
15	50° 07.368 N	003° 35.373 W
Then follow the six nautical mile limit to Point 16		
16	50° 06.084 N	003° 43.000 W
17	50° 09.000 N	003° 44.100 W
18	50° 12.200 N	003° 45.800 W
19	50° 13.444 N	003° 46.402 W
Landward boundary follows mean high water to Point 1		

*www.ukho.gov.uk/copyright

All Positions are expressed in degrees, decimal minutes (DDM) and shall be measured according to the WGS84 Geographic Co-ordinate System

Version Control: Mobile Fishing Permit Byelaw Permit Annexes December 2024

Annex 8 Specified Coastal Mariculture Sites - No Access to Vessels using Mobile Fishing Gear in accordance with Paragraph 3.8 of the Mobile Fishing Permit Byelaw Category One Permit Conditions



*www.ukho.gov.uk/copyright

All Positions are expressed in degrees, decimal minutes (DDM) and shall be measured according to the WGS84 Geographic Co-ordinate System

Version Control: Mobile Fishing Permit Byelaw Permit Annexes December 2024

**Annex 8 Specified Coastal Mariculture Sites -
 Tor Bay Area C
 No Access to Vessels using Mobile Fishing Gear**



*www.ukho.gov.uk/copyright

All Positions are expressed in degrees, decimal minutes (DDM) and shall be measured according to the WGS84 Geographic Co-ordinate System

Version Control: Mobile Fishing Permit Byelaw Permit Annexes December 2024

Area A Lyme Bay

No access to vessels using mobile fishing gear in the area within the D&S IFCA District outlined by the following points plotted sequentially from Point 1 to Point 4, then returning to Point 1.

Point Number	Latitude	Longitude
1	50° 39.200 N	003° 10.028 W
2	50° 37.600 N	003° 09.600 W
3	50° 37.405 N	003° 11.281 W
4	50° 39.010 N	003° 11.700 W

Area B Lyme Bay

No access to vessels using mobile fishing gear in the area within the D&S IFCA District outlined by the following points plotted sequentially from Point 5 to Point 8, then returning to Point 5.

Point Number	Latitude	Longitude
5	50° 35.927 N	003° 13.488 W
6	50° 34.397 N	003° 12.632 W
7	50° 34.025 N	003° 14.205 W
8	50° 35.556 N	003° 15.086 W

Area C Tor Bay

No access to vessels using mobile fishing gear in the area within the D&S IFCA District outlined by the following points plotted sequentially from Point 9 to Point 12, then returning to Point 9.

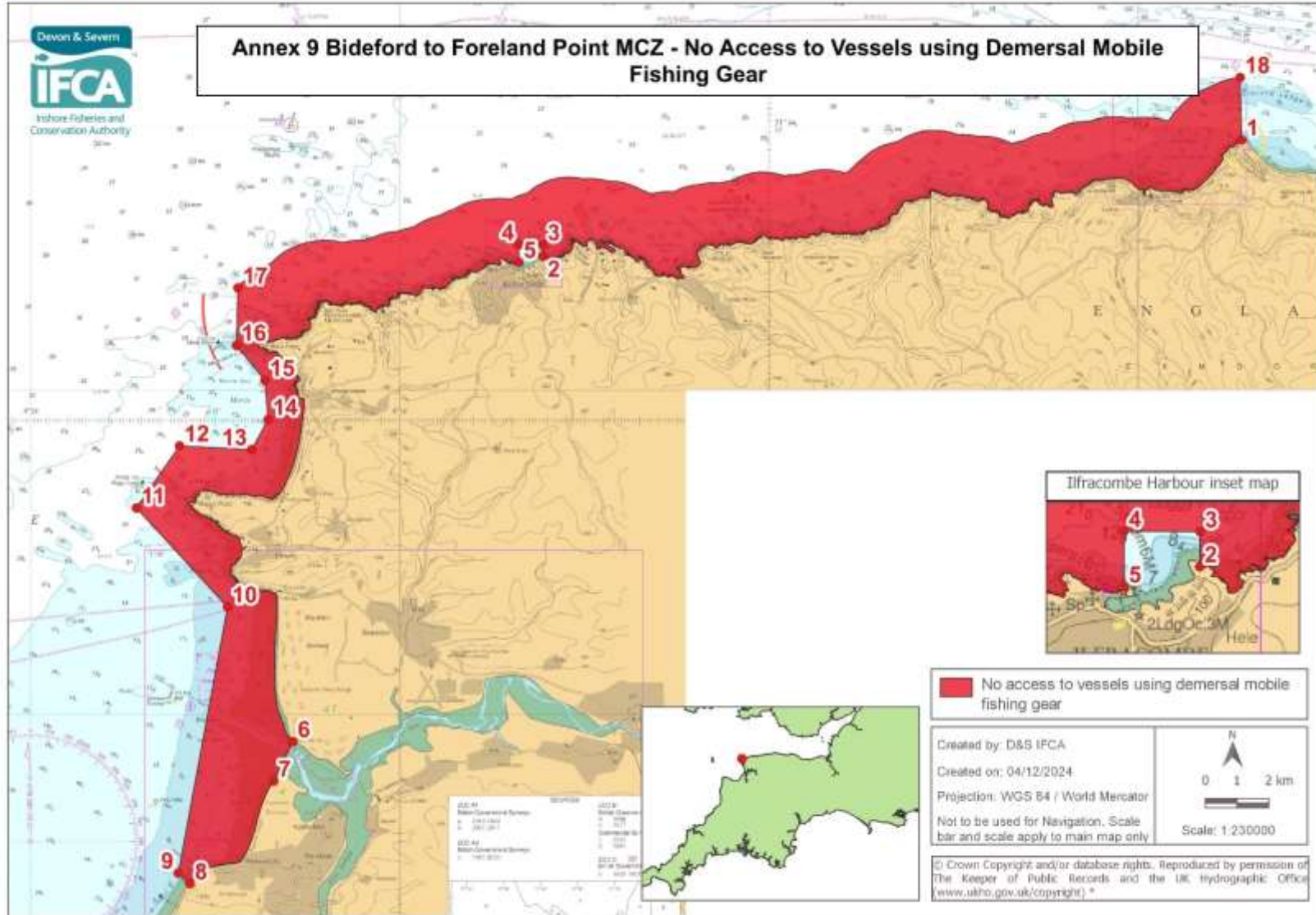
Point Number	Latitude	Longitude
9	50° 26.865 N	003° 29.080 W
10	50° 26.615 N	003° 29.080 W
11	50° 26.615 N	003° 29.780 W
12	50° 26.865 N	003° 29.780 W

*www.ukho.gov.uk/copyright

All Positions are expressed in degrees, decimal minutes (DDM) and shall be measured according to the WGS84 Geographic Co-ordinate System

Version Control: Mobile Fishing Permit Byelaw Permit Annexes December 2024

Annex 9 Bideford to Foreland Point MCZ – No Access to Vessels using Demersal Mobile Fishing Gear



*www.ukho.gov.uk/copyright

All Positions are expressed in degrees, decimal minutes (DDM) and shall be measured according to the WGS84 Geographic Co-ordinate System

Version Control: Mobile Fishing Permit Byelaw Permit Annexes December 2024

No access to vessels using demersal mobile fishing gear in the area within the D&S IFCA District outlined by the following points plotted sequentially from Point 1 to Point 18 then returning to Point 1. The landward boundary follows Mean High Water.

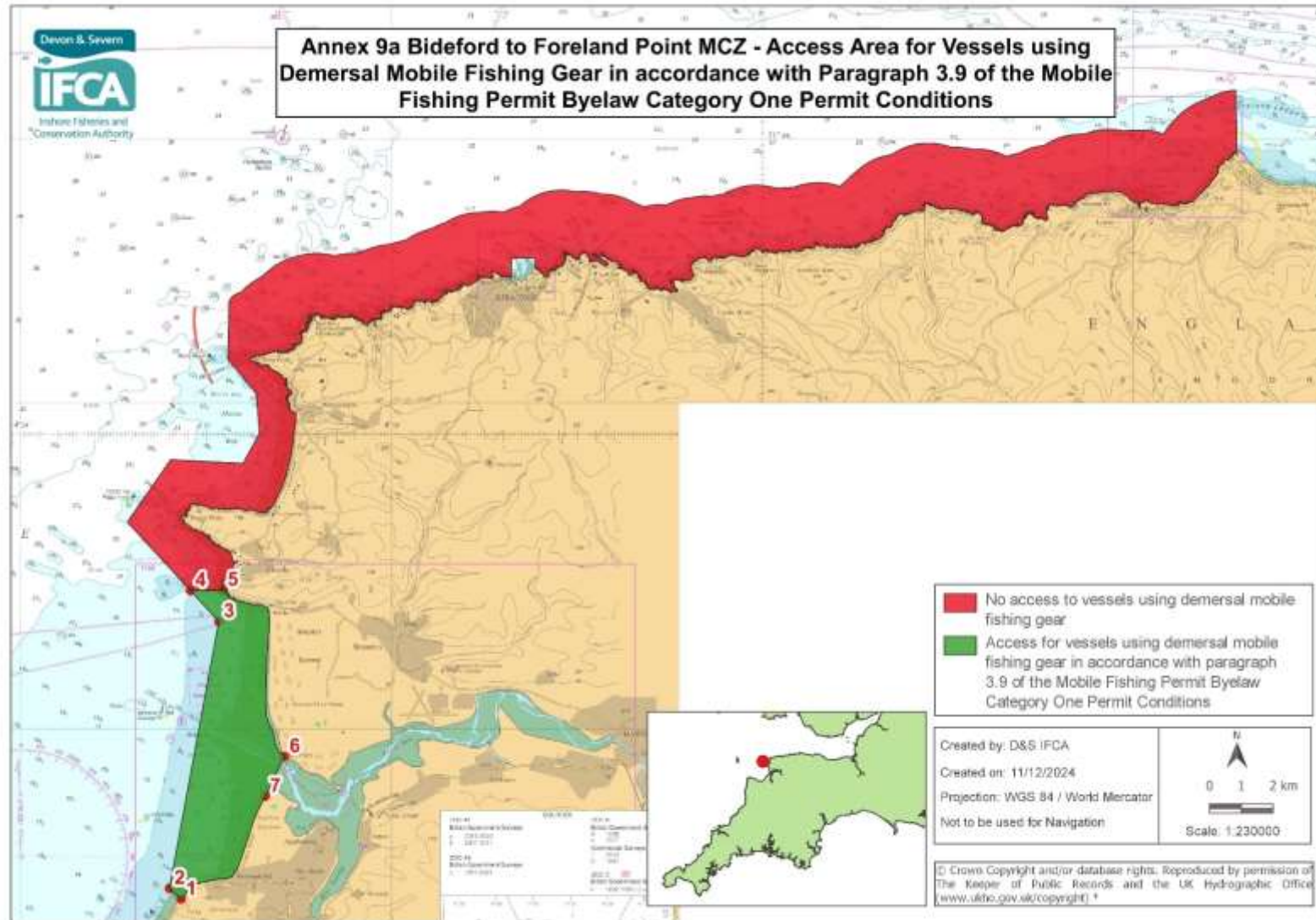
Point Number	Latitude	Longitude
1	51° 14.764 N	003° 47.204 W
Landward boundary follows Mean High Water to Point 2		
2	51° 12.792 N	004° 06.130 W
3	51° 12.980 N	004° 06.126 W
4	51° 12.983 N	004° 06.778 W
5	51° 12.683 N	004° 06.778 W
Landward boundary follows Mean High Water to Point 6		
6	51° 04.524 N	004° 12.897 W
7	51° 03.849 N	004° 13.416 W
Landward boundary follows Mean High Water to Point 8		
8	51° 02.098 N	004° 15.685 W
9	51° 02.281 N	004° 16.001 W
10	51° 06.816 N	004° 14.667 W
11	51° 08.505 N	004° 17.135 W
12	51° 09.563 N	004° 15.967 W
13	51° 09.499 N	004° 14.015 W
14	51° 10.011 N	004° 13.570 W
15	51° 10.676 N	004° 13.655 W
16	51° 11.274 N	004° 14.426 W
17	51° 12.250 N	004° 14.385 W
Seaward boundary follows a one nautical mile line from Mean High Water to Point 18		
18	51° 15.825 N	003° 47.244 W

*www.ukho.gov.uk/copyright

All Positions are expressed in degrees, decimal minutes (DDM) and shall be measured according to the WGS84 Geographic Co-ordinate System

Version Control: Mobile Fishing Permit Byelaw Permit Annexes December 2024

Annex 9a Bideford to Foreland Point MCZ – Access Area for Vessels using Demersal Mobile Fishing Gear in accordance with Paragraph 3.9 of the Mobile Fishing Permit Byelaw Category One Permit Conditions



*www.ukho.gov.uk/copyright

All Positions are expressed in degrees, decimal minutes (DDM) and shall be measured according to the WGS84 Geographic Co-ordinate System

Version Control: Mobile Fishing Permit Byelaw Permit Annexes December 2024

Access area for vessels using demersal mobile fishing gear within the D&S IFCA District outlined by the following points plotted sequentially from Point 1 to Point 7, then returning to Point 1. The landward boundary follows Mean High Water.

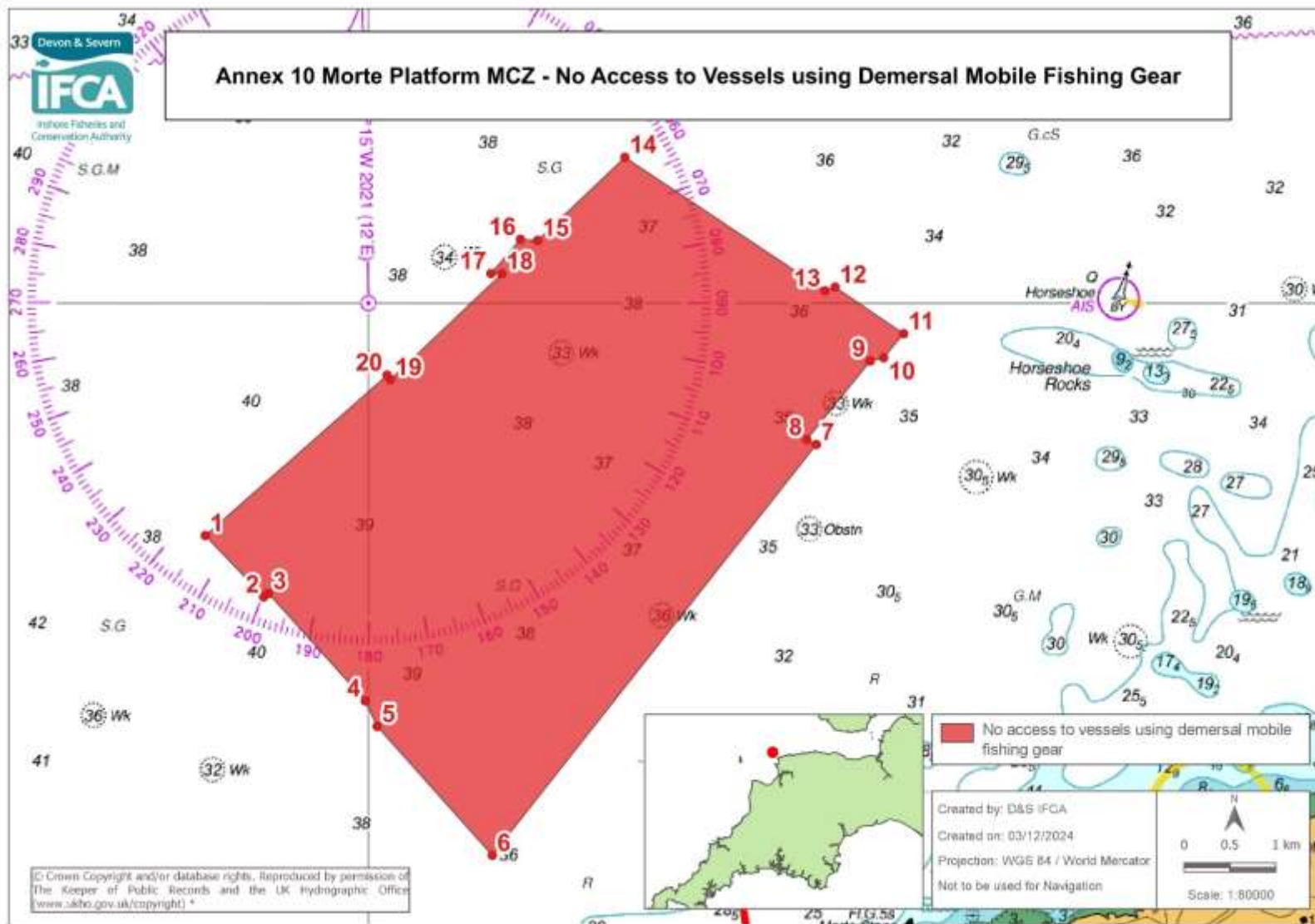
Point Number	Latitude	Longitude
1	51° 02.098 N	004° 15.685 W
2	51° 02.281 N	004° 16.001 W
3	51° 06.816 N	004° 14.667 W
4	51° 07.341 N	004° 15.434 W
5	51° 07.351 N	004° 14.561 W
6	51° 04.524 N	004° 12.897 W
7	51° 03.849 N	004° 13.416 W

*www.ukho.gov.uk/copyright

All Positions are expressed in degrees, decimal minutes (DDM) and shall be measured according to the WGS84 Geographic Co-ordinate System

Version Control: Mobile Fishing Permit Byelaw Permit Annexes December 2024

Annex 10 Morte Platform MCZ – No Access to Vessels using Demersal Mobile Fishing Gear



*www.ukho.gov.uk/copyright

All Positions are expressed in degrees, decimal minutes (DDM) and shall be measured according to the WGS84 Geographic Co-ordinate System

Version Control: Mobile Fishing Permit Byelaw Permit Annexes December 2024

No access to vessels using demersal mobile fishing gear in the area within the D&S IFCA District outlined by the following points plotted sequentially from Point 1 to Point 20, then returning to Point 1.

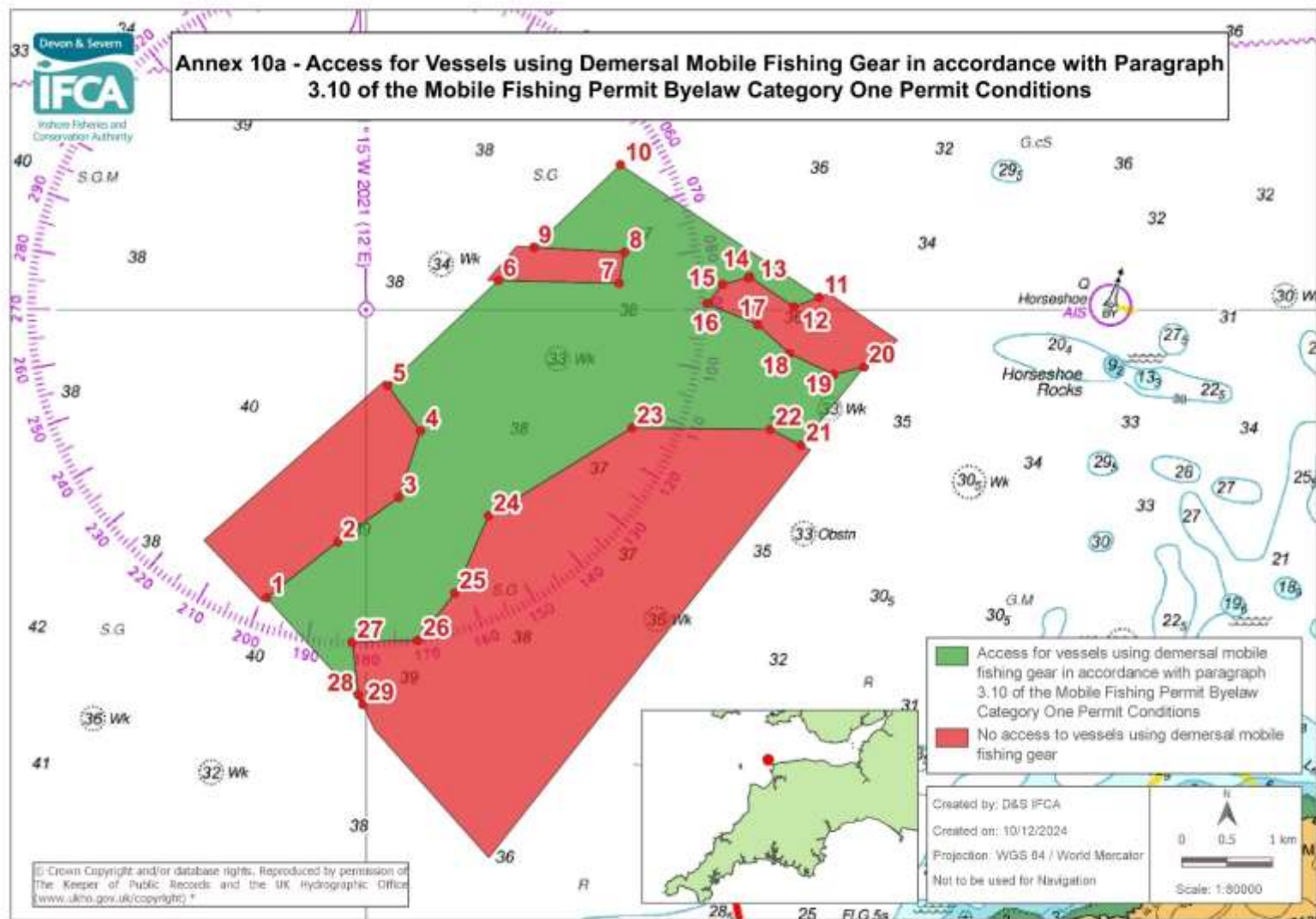
Point Number	Latitude	Longitude
1	51° 13.622 N	004° 21.535 W
2	51° 13.261 N	004° 20.986 W
3	51° 13.281 N	004° 20.942 W
4	51° 12.647 N	004° 20.032 W
5	51° 12.497 N	004° 19.921 W
6	51° 11.737 N	004° 18.840 W
7	51° 14.158 N	004° 15.797 W
8	51° 14.187 N	004° 15.886 W
9	51° 14.650 N	004° 15.291 W
10	51° 14.670 N	004° 15.165 W
11	51° 14.811 N	004° 14.977 W
12	51° 15.086 N	004° 15.621 W
13	51° 15.064 N	004° 15.714 W
14	51° 15.851 N	004° 17.594 W
15	51° 15.361 N	004° 18.414 W
16	51° 15.368 N	004° 18.575 W
17	51° 15.166 N	004° 18.852 W
18	51° 15.164 N	004° 18.751 W
19	51° 14.541 N	004° 19.796 W
20	51° 14.567 N	004° 19.827 W

*www.ukho.gov.uk/copyright

All Positions are expressed in degrees, decimal minutes (DDM) and shall be measured according to the WGS84 Geographic Co-ordinate System

Version Control: Mobile Fishing Permit Byelaw Permit Annexes December 2024

Annex 10a Morte Platform MCZ – Access Area for Vessels using Demersal Mobile Fishing Gear in accordance with Paragraph 3.10 of the Mobile Fishing Permit Byelaw Category One Permit Conditions



*www.ukho.gov.uk/copyright

All Positions are expressed in degrees, decimal minutes (DDM) and shall be measured according to the WGS84 Geographic Co-ordinate System

Version Control: Mobile Fishing Permit Byelaw Permit Annexes December 2024

Access area for vessels using demersal mobile fishing gear within the D&S IFCA District outlined by the following points plotted sequentially from Point 1 to Point 29, then returning to Point 1.

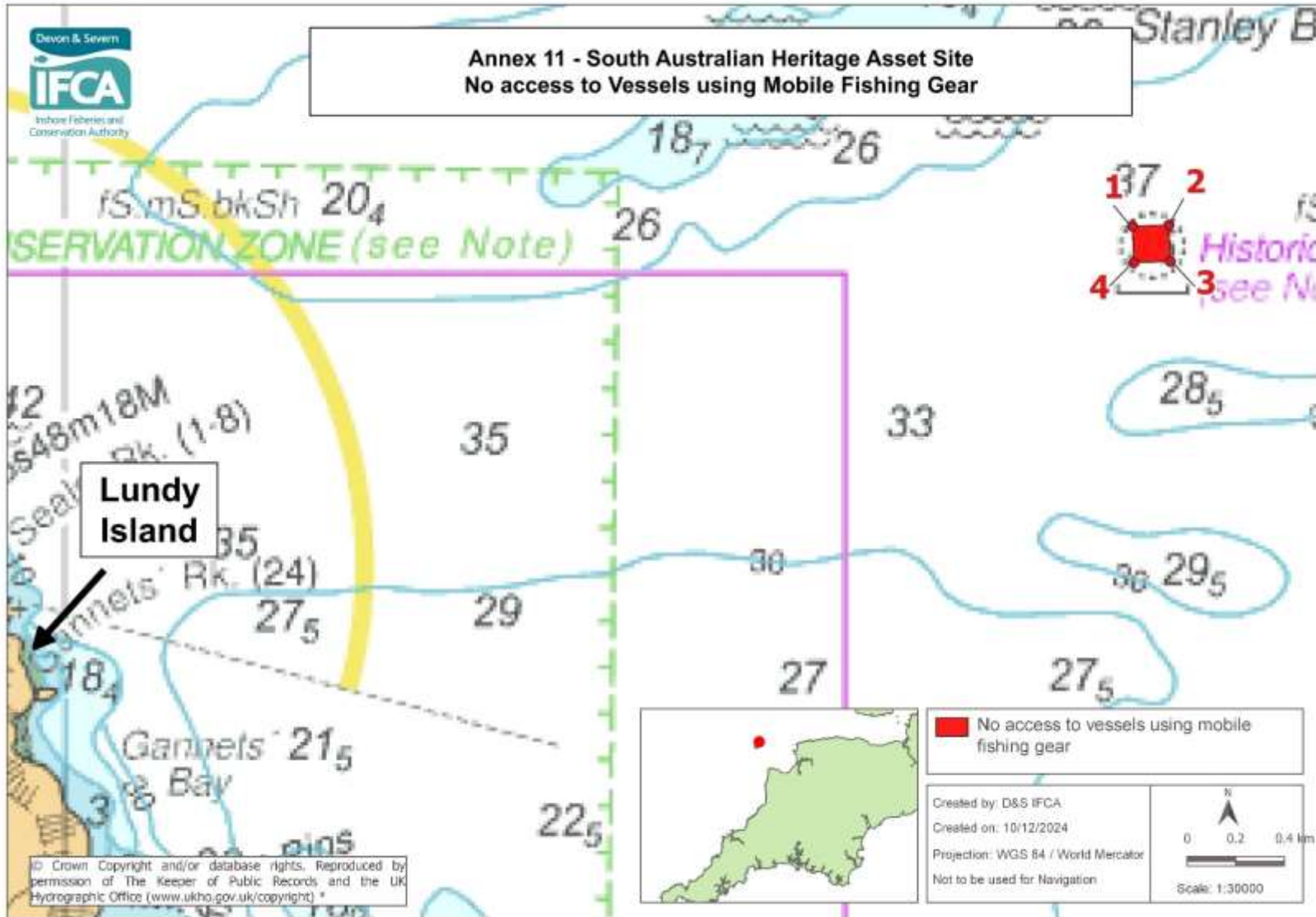
Point Number	Latitude	Longitude
1	51° 13.281 N	004° 20.942 W
2	51° 13.612 N	004° 20.269 W
3	51° 13.876 N	004° 19.691 W
4	51° 14.270 N	004° 19.485 W
5	51° 14.541 N	004° 19.796 W
6	51° 15.164 N	004° 18.751 W
7	51° 15.148 N	004° 17.607 W
8	51° 15.331 N	004° 17.557 W
9	51° 15.361 N	004° 18.414 W
10	51° 15.851 N	004° 17.594 W
11	51° 15.064 N	004° 15.714 W
12	51° 15.007 N	004° 15.953 W
13	51° 15.185 N	004° 16.372 W
14	51° 15.180 N	004° 16.385 W
15	51° 15.142 N	004° 16.628 W
16	51° 15.028 N	004° 16.774 W
17	51° 14.902 N	004° 16.296 W
18	51° 14.731 N	004° 15.997 W
19	51° 14.606 N	004° 15.578 W
20	51° 14.650 N	004° 15.291 W
21	51° 14.188 N	004° 15.886 W
22	51° 14.281 N	004° 16.177 W
23	51° 14.290 N	004° 17.485 W
24	51° 13.768 N	004° 18.842 W
25	51° 13.308 N	004° 19.162 W
26	51° 13.028 N	004° 19.509 W
27	51° 13.018 N	004° 20.132 W
28	51° 12.702 N	004° 20.072 W
29	51° 12.647 N	004° 20.032 W

*www.ukho.gov.uk/copyright

All Positions are expressed in degrees, decimal minutes (DDM) and shall be measured according to the WGS84 Geographic Co-ordinate System

Version Control: Mobile Fishing Permit Byelaw Permit Annexes December 2024

Annex 11 South Australian Wreck – No Access to Vessels using Mobile Fishing Gear



*www.ukho.gov.uk/copyright

All Positions are expressed in degrees, decimal minutes (DDM) and shall be measured according to the WGS84 Geographic Co-ordinate System

Version Control: Mobile Fishing Permit Byelaw Permit Annexes December 2024

No access to vessels using mobile fishing gear in the area within the D&S IFCA District outlined by the following points plotted sequentially from Point 1 to Point 4, then returning to Point 1.

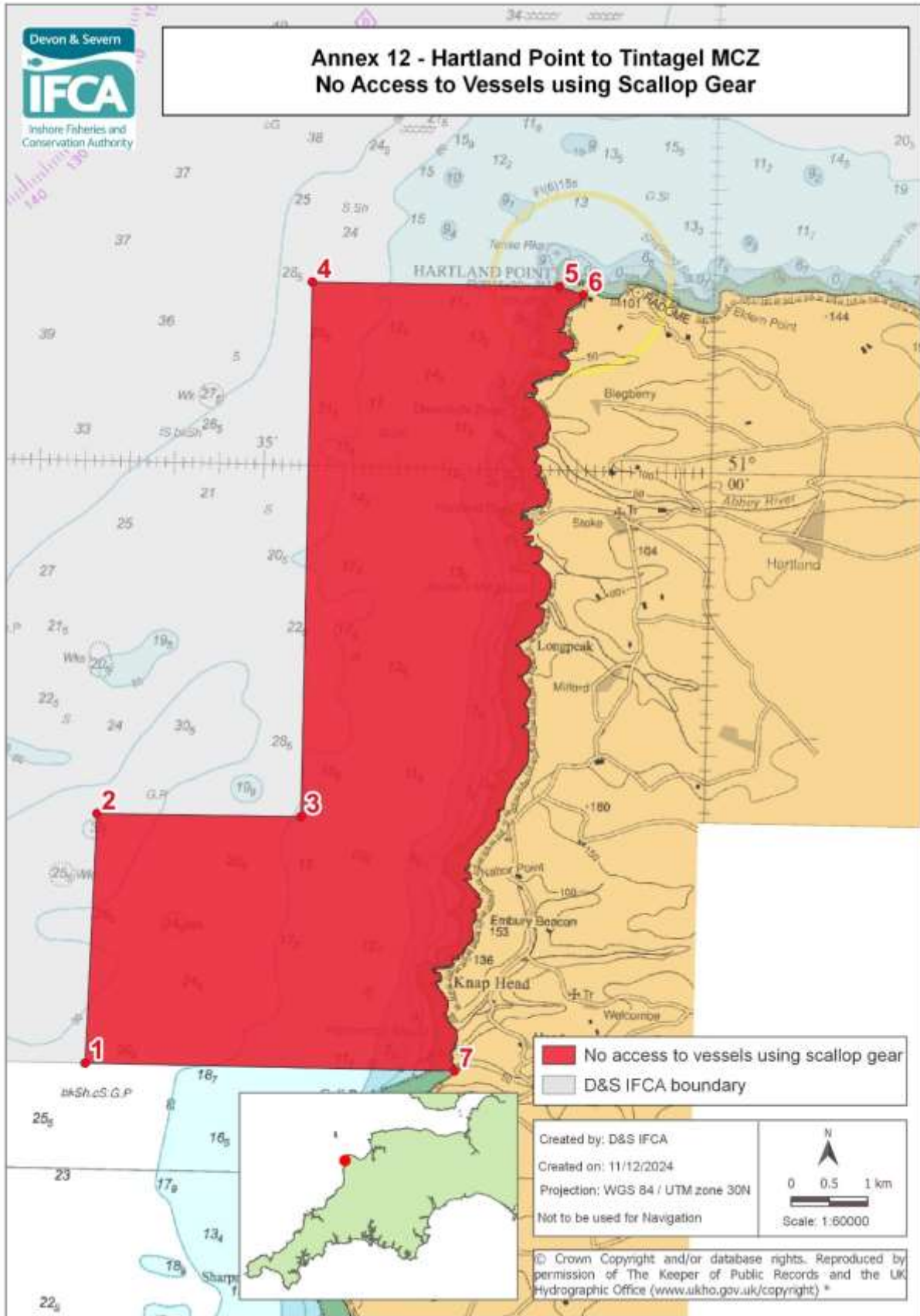
Point Number	Latitude	Longitude
1	51° 12.845 N	004° 36.229 W
2	51° 12.848 N	004° 36.100 W
3	51° 12.767 N	004° 36.095 W
4	51° 12.764 N	004° 36.224 W

*www.ukho.gov.uk/copyright

All Positions are expressed in degrees, decimal minutes (DDM) and shall be measured according to the WGS84 Geographic Co-ordinate System

Version Control: Mobile Fishing Permit Byelaw Permit Annexes December 2024

Annex 12 Hartland Point to Tintagel MCZ – No Access to Vessels Using Scallop Gear



*www.ukho.gov.uk/copyright

All Positions are expressed in degrees, decimal minutes (DDM) and shall be measured according to the WGS84 Geographic Co-ordinate System

Version Control: Mobile Fishing Permit Byelaw Permit Annexes December 2024

No access to vessels using scallop gear in the area within the D&S IFCA District outlined by the following points plotted sequentially from Point 1 to Point 7, then returning to Point 1. The landward boundary follows Mean High Water.

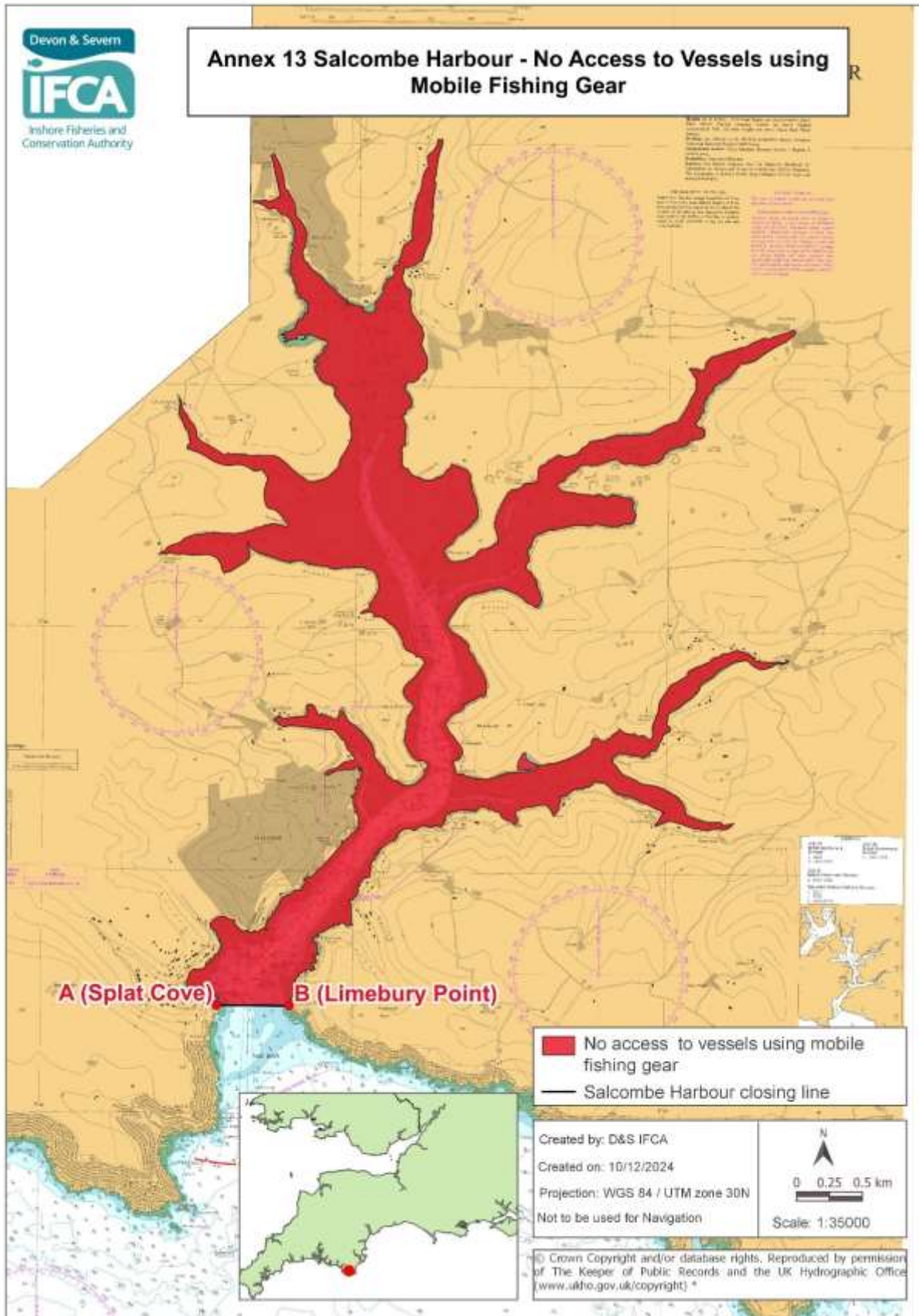
Point Number	Latitude	Longitude
1	50° 55.738 N	004° 36.852 W
2	50° 57.500 N	004° 36.781 W
3	50° 57.510 N	004° 34.503 W
4	51° 01.283 N	004° 34.503 W
5	51° 01.289 N	004° 31.741 W
6	51° 01.232 N	004° 31.468 W
7	50° 55.738 N	004° 32.729 W

*www.ukho.gov.uk/copyright

All Positions are expressed in degrees, decimal minutes (DDM) and shall be measured according to the WGS84 Geographic Co-ordinate System

Version Control: Mobile Fishing Permit Byelaw Permit Annexes December 2024

Annex 13 Salcombe Harbour - No Access to Vessels using Mobile Fishing Gear



*www.ukho.gov.uk/copyright

All Positions are expressed in degrees, decimal minutes (DDM) and shall be measured according to the WGS84 Geographic Co-ordinate System

Version Control: Mobile Fishing Permit Byelaw Permit Annexes December 2024

No access to vessels using mobile fishing gear in Salcombe Harbour within the D&S IFCA's District landward of a line drawn between Point A and Point B.

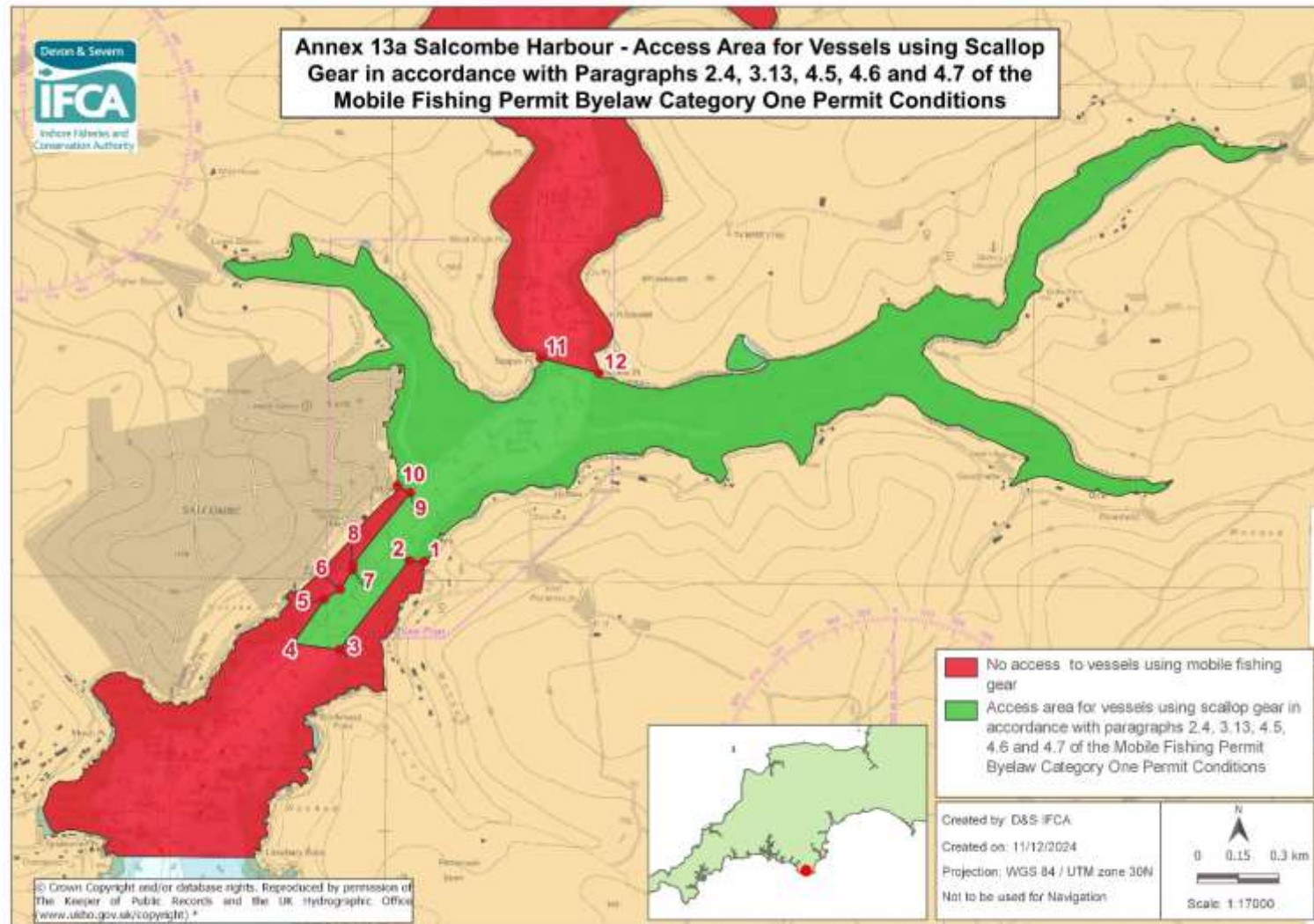
Point	Latitude	Longitude
A (Splat Cove)	50° 13.444 N	003° 46.871 W
B (Limebury Point)	50° 13.444 N	003° 46.402 W

*www.ukho.gov.uk/copyright

All Positions are expressed in degrees, decimal minutes (DDM) and shall be measured according to the WGS84 Geographic Co-ordinate System

Version Control: Mobile Fishing Permit Byelaw Permit Annexes December 2024

Annex13a Salcombe Harbour – Access Area for Vessels using Scallop Gear in accordance with Paragraphs 2.4, 3.13, 4.5, 4.6 and 4.7 of the Mobile Fishing Permit Byelaw Category One Permit Conditions



*www.ukho.gov.uk/copyright

All Positions are expressed in degrees, decimal minutes (DDM) and shall be measured according to the WGS84 Geographic Co-ordinate System

Version Control: Mobile Fishing Permit Byelaw Permit Annexes December 2024

Access area for vessel using scallop gear in Salcombe Harbour within the D&S IFCA District outlined by the following points plotted sequentially from Point 1 to Point 12, then returning to Point 1. The landward boundary follows Mean High Water.

Point Number	Latitude	Longitude
1	50° 14.037 N	003° 45.886 W
2	50° 14.039 N	003° 45.934 W
3	50° 13.860 N	003° 46.148 W
4	50° 13.871 N	003° 46.292 W
5	50° 13.960 N	003° 46.196 W
6	50° 13.980 N	003° 46.147 W
7	50° 14.019 N	003° 46.109 W
8	50° 14.030 N	003° 46.109 W
9	50° 14.174 N	003° 45.932 W
10	50° 14.188 N	003° 45.973 W
Landward boundary follows Mean High Water to Point 11		
11	50° 14.445 N	003° 45.532 W
12	50° 14.416 N	003° 45.350 W
Landward boundary follows Mean High Water to Point 1		

*www.ukho.gov.uk/copyright

All Positions are expressed in degrees, decimal minutes (DDM) and shall be measured according to the WGS84 Geographic Co-ordinate System

Version Control: Mobile Fishing Permit Byelaw Permit Annexes December 2024

Annex 14

Areas where IVMS Transmission is not required in accordance with Paragraph 2.6 (b) of the Mobile Fishing Permit Byelaw Category One Permit Conditions.

Brixham – Landward of the boundary line between Points:

Point	Latitude	Longitude
A	50° 24.335 N	003° 30.779 W
B	50° 24.190 N	003° 31.226 W

Torquay - Landward of the boundary line between Points:

Point	Latitude	Longitude
A	50° 27.461 N	003° 31.731 W
B	50° 27.433 N	003° 31.736 W

Teignmouth- Landward of the boundary line between Points:

Point	Latitude	Longitude
A (Southern leading light)	50° 32.546 N	003° 29.810 W
B (The Ness)	50° 32.279 N	003° 29.810 W

Exmouth - Landward of the boundary line between Points:

Point	Latitude	Longitude
A (Langstone Point)	50° 35.518 N	003° 26.629 W
B (Orcombe Point)	50° 36.421 N	003° 23.108 W

Axmouth - Landward of the boundary line between Points:

Point	Latitude	Longitude
A	50° 42.135 N	003° 03.354 W
B	50° 42.135 N	003° 03.274 W

Dartmouth – Landward of the boundary line between Points:

Point	Latitude	Longitude
A (Combe Point)	50° 19.648 N	003° 34.220 W
B (Inner Froward Point)	50° 20.121 N	003° 32.648 W

*www.ukho.gov.uk/copyright

All Positions are expressed in degrees, decimal minutes (DDM) and shall be measured according to the WGS84 Geographic Co-ordinate System

Version Control: Mobile Fishing Permit Byelaw Permit Annexes December 2024

Annex 14 (continued)

Areas where IVMS Transmission is not required in accordance with Paragraph 2.6 (b) of the Mobile Fishing Permit Byelaw Category One Permit Conditions.

Salcombe – Landward of the boundary line between Points:

Point	Latitude	Longitude
A (Splat Cove)	50° 13.444 N	003° 46.871 W
B (Limebury Point)	50° 13.444 N	003° 46.402 W

Yealm – Landward of the boundary line between Points:

Point	Latitude	Longitude
A (Season Point)	50° 18.736 N	004° 04.148 W
B (Mouth Stone)	50° 18.550 N	004° 04.275 W

Sutton Harbour – Landward of the boundary line between Points:

Point	Latitude	Longitude
A	50° 21.580 N	004° 09.820 W
B	50° 21.850 N	004° 07.490 W

Tamar – Landward of the boundary line between Points:

Point	Latitude	Longitude
A	50° 21.760 N	004° 10.120 W
B	50° 21.580 N	004° 10.040 W

Taw Torridge – Landward of the boundary line between Points:

Point	Latitude	Longitude
A	51° 02.620 N	004° 14.270 W
B	51° 07.040 N	004° 13.470 W

Ilfracombe – Landward of the boundary line between Points:

Point	Latitude	Longitude
A	51° 12.640 N	004° 06.680 W
B	51° 12.580 N	004° 06.500 W

Watchet – Landward of the boundary line between Points:

Point	Latitude	Longitude
A	51° 11.040 N	003° 19.750 W
B	51° 11.000 N	003° 19.680 W

*www.ukho.gov.uk/copyright

All Positions are expressed in degrees, decimal minutes (DDM) and shall be measured according to the WGS84 Geographic Co-ordinate System

Version Control: Mobile Fishing Permit Byelaw Permit Annexes December 2024